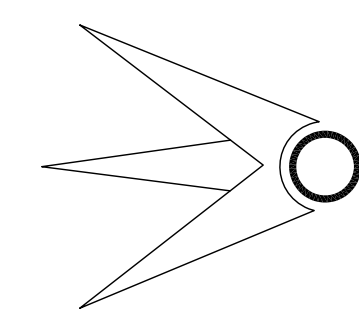


A S S E S S M E N T

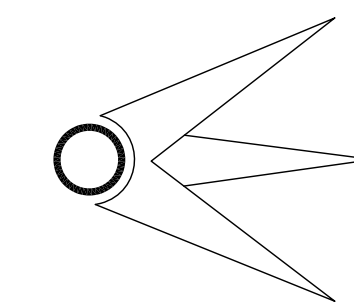
T A X

M A P

OF THE



TOWN OF DOVER



2016

MORRIS COUNTY, NEW JERSEY

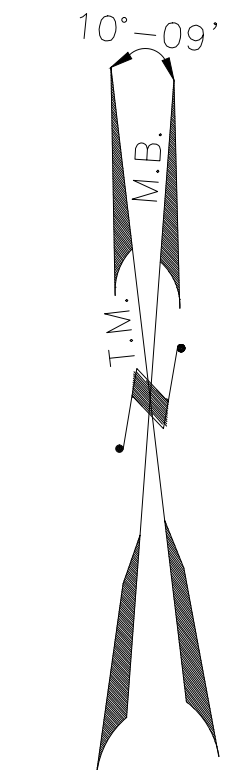
ADAMS, REHMANN & HEGGAN

PROFESSIONAL ENGINEERS, LAND SURVEYORS & PLANNERS

(609) 561-0482 Phone (609) 567-8909 Fax

850 SO. WHITE HORSE PIKE

HAMMONTON, NEW JERSEY 08037



| REVISIONS | | | | |
|-----------|---------|--------|-------|--------------|
| DATE | BY | LIC.NO | BLOCK | LOT |
| 12/15 | ED CLAY | 34842 | | STATE REVIEW |
| | | | | |
| | | | | |
| | | | | |

* THIS MAP IS A COPY OF THE ORIGINAL MAP PREPARED BY ARNOLD R. SMITH DATED 1931. THE ORIGINAL IS ON FILE IN THE ENGINEERS OFFICE.

* THIS SHEET HAS BEEN DRAWN USING COMPUTER AIDED DRAFTING/ DESIGN (CAD/D) AND COORDINATE GEOMETRY (COGO).



THIS TAX MAP SUPERSEDES THE TAX MAP APPROVED SEPTEMBER 4, 1968.

THIS MAP WAS FORMALLY CERTIFIED BY THE DIVISION OF TAXATION ON SEPTEMBER 26, 2008, SIGNED BY SANTO C. DIDONATO AND ASSIGNED SERIAL NUMBER 926

TAX MAP
TOWN OF DOVER

MORRIS COUNTY SCALE: 1" = 600' NEW JERSEY DATE: JUNE 2007

ARNOLD W. BARNETT
PROFESSIONAL ENGINEER AND LAND SURVEYOR
NEW JERSEY LICENSE NO. 14987
850 SO. WHITE HORSE PIKE
HAMMONTON, NEW JERSEY 08037
CO# 24GA27973300

TO SHOW CONDITIONS AS OF JULY 2016

- SCALE: 1" = 600'
- LEGEND**
- 21 DETAIL SHEET NUMBER
 - 234 BLOCK NUMBER
 - SHEET LIMIT
 - RIGHT OF WAY/BLOCK LIMIT
 - COUNTY LINE
 - MUNICIPAL LINE
- DETAIL SHEET**
- 234 BLOCK NUMBER
 - 23 LOT NUMBER
 - MATCH LINE
 - ASSESSMENT LIMIT

THE AREAS, BOUNDARIES AND DIMENSIONS, SHOWN ON THIS TAX MAP, HAVE BEEN DIGITALLY REPRODUCED FROM HARD COPY TAX MAPS FURNISHED BY THE BOROUGH WHICH WERE DERIVED FROM GROUND SURVEYS, AERIAL SURVEYS, AND RECORDED PLANS, MAPS, DEEDS, WILLS, AND ARE TO BE USED FOR ASSESSMENT PURPOSES ONLY.

I HEREBY CERTIFY THAT THIS MAP HAS BEEN REVISED UNDER MY IMMEDIATE SUPERVISION, AND COMPLIES WITH THE LAWS OF THE STATE OF NEW JERSEY.

ED CLAY LICENSED LAND SURVEYOR DATE _____
N.J. LICENSE NO. 34842

SHEET 2

MINE HILL TOWNSHIP
MORRIS COUNTY

Brook

BROOK LA

PARK HEIGHTS AVE

HILLTOP RD
(UNIMPROVED)

102

3
30.88 Ac±
EXEMPT
MORRIS COUNTY PARK

101

4
14.63 Ac±
EXEMPT
MORRIS COUNTY PARK

RANDOLPH TOWNSHIP
MORRIS COUNTY

6
3.77 Ac±
EXEMPT
MORRIS COUNTY PARK

103

5
2.25 Ac±

EDGEWOOD TER

ROCKRIDGE TER

BEAUFORT AVE

104

EV-KEN TER

SHEET 4

SHEET 5

* THIS MAP IS A COPY OF THE ORIGINAL MAP PREPARED BY
ARNOLD R. SMITH DATED 1931. THE ORIGINAL IS ON FILE
IN THE ENGINEERS OFFICE.

* THIS SHEET HAS BEEN DRAWN USING COMPUTER AIDED DRAFTING/
DESIGN (CAD/D) AND COORDINATE GEOMETRY (COGO).

| REVISIONS | | | | |
|-----------|-------------------|--------|-------|-----|
| DATE | BY | LIC.NO | BLOCK | LOT |
| | ARNOLD W. BARNETT | 14987 | | |
| | | | | |
| | | | | |
| | | | | |
| | | | | |

THIS MAP WAS FORMALLY
CERTIFIED BY THE
DIVISION OF TAXATION ON
SEPTEMBER 26, 2008, SIGNED
BY SANTO C. DIDONATO AND
ASSIGNED SERIAL NUMBER 926

TAX MAP
TOWN OF DOVER

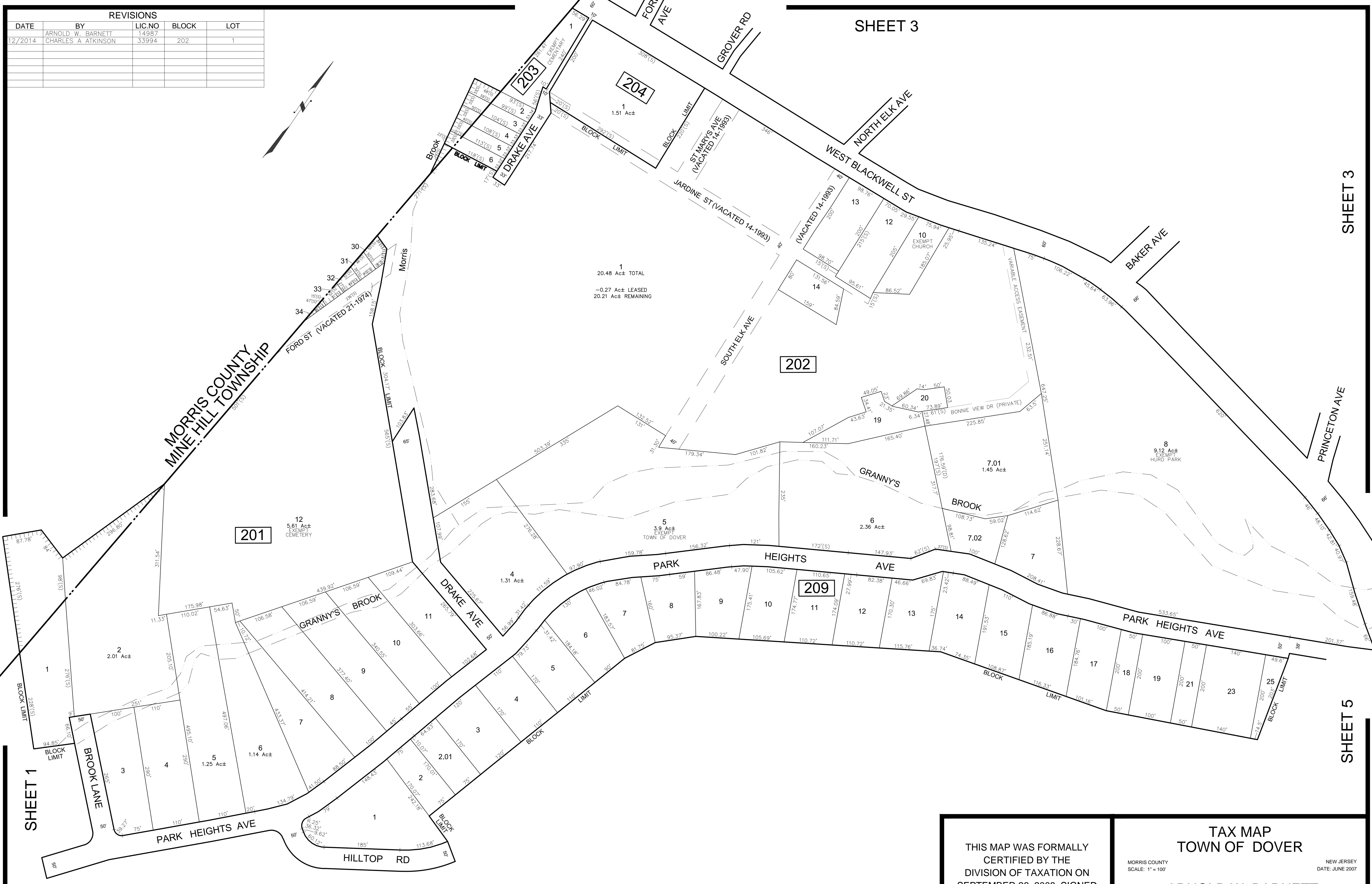
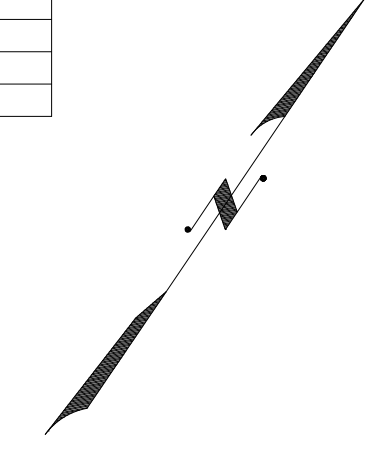
MORRIS COUNTY
SCALE: 1" = 100'

NEW JERSEY
DATE: JUNE 2007

ARNOLD W. BARNETT
PROFESSIONAL ENGINEER AND LAND SURVEYOR
NEW JERSEY LICENSE NO. 14987
850 SO. WHITE HORSE PIKE
HAMMONTON, NEW JERSEY 08037
CO# 24GA27973300

TO SHOW CONDITIONS AS OF JULY 2016

| REVISIONS | | | | |
|-----------|---------------------|--------|-------|-----|
| DATE | BY | LIC.NO | BLOCK | LOT |
| 12/2014 | ARNOLD W. BARNETT | 14987 | 202 | 1 |
| | CHARLES A. ATKINSON | 33994 | 202 | 1 |
| | | | | |
| | | | | |
| | | | | |



* THIS MAP IS A COPY OF THE ORIGINAL MAP PREPARED BY ARNOLD R. SMITH DATED 1931. THE ORIGINAL IS ON FILE IN THE ENGINEERS OFFICE.

* THIS SHEET HAS BEEN DRAWN USING COMPUTER AIDED DRAFTING/ DESIGN (CAD/D) AND COORDINATE GEOMETRY (COGO).

SHEET 1

SHEET 3

SHEET 3

SHEET 5

THIS MAP WAS FORMALLY CERTIFIED BY THE DIVISION OF TAXATION ON SEPTEMBER 26, 2008, SIGNED BY SANTO C. DIDONATO AND ASSIGNED SERIAL NUMBER 926

TAX MAP
TOWN OF DOVER

MORRIS COUNTY
 SCALE: 1" = 100'

NEW JERSEY
 DATE: JUNE 2007

ARNOLD W. BARNETT
 PROFESSIONAL ENGINEER AND LAND SURVEYOR
 NEW JERSEY LICENSE NO. 14987
 850 SO. WHITE HORSE PIKE
 HAMMONTON, NEW JERSEY 08037
 CO# 24GA27973300

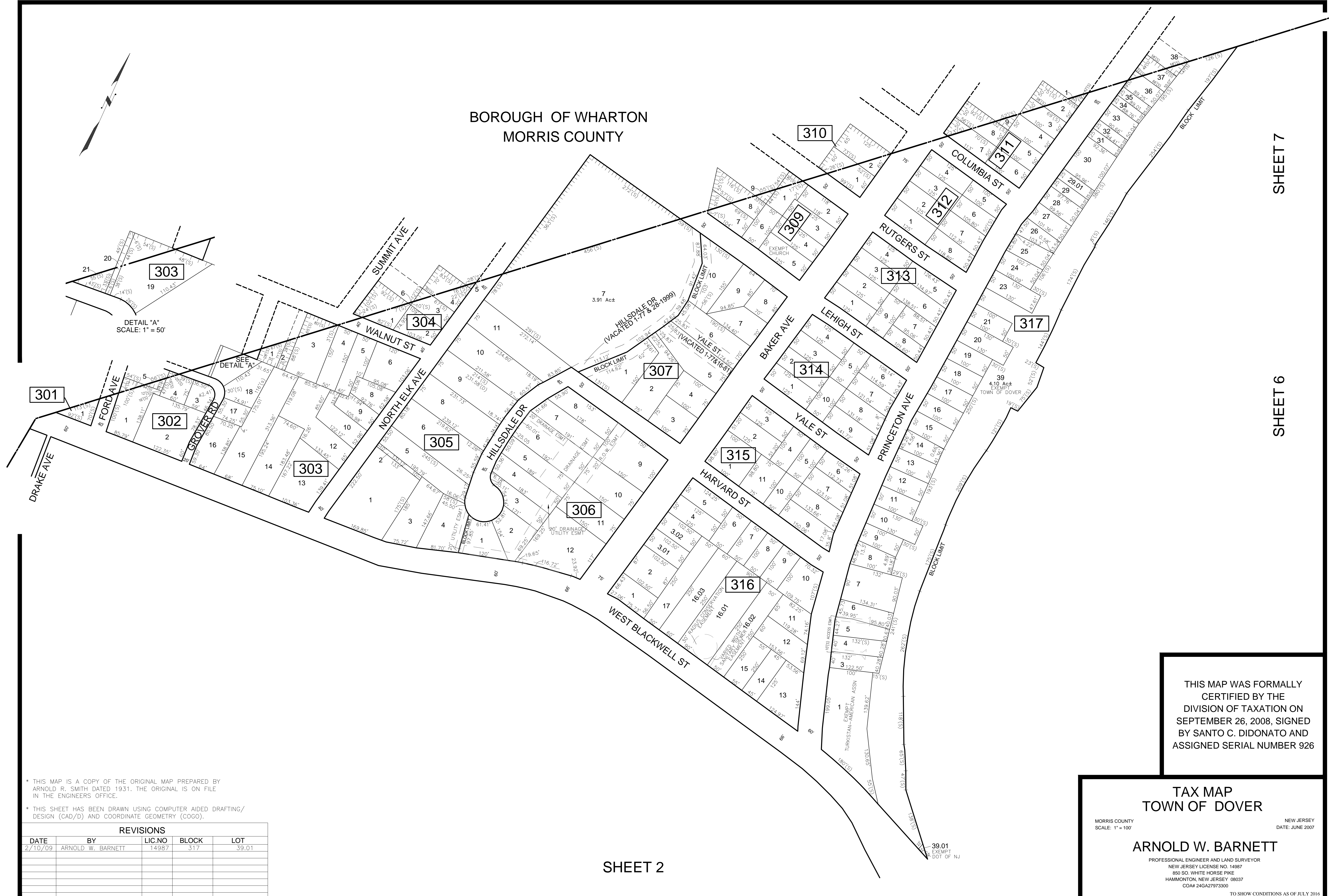
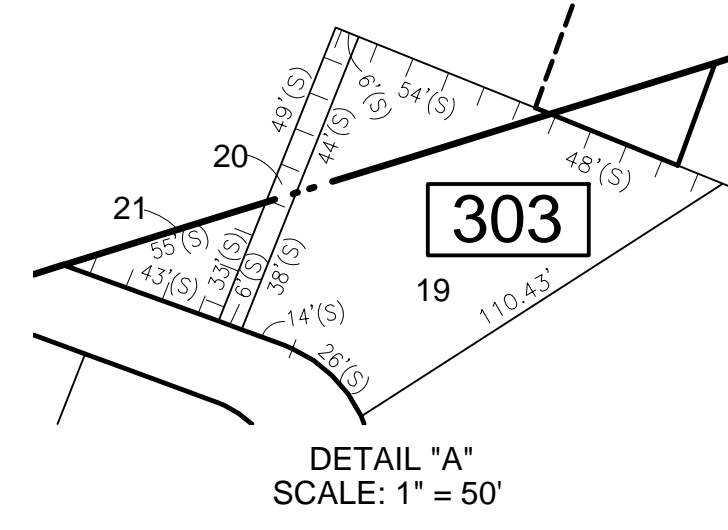
TO SHOW CONDITIONS AS OF JULY 2016

BOROUGH OF WHARTON
MORRIS COUNTY

SHEET 7

SHEET 6

SHEET 2



* THIS MAP IS A COPY OF THE ORIGINAL MAP PREPARED BY
ARNOLD R. SMITH DATED 1931. THE ORIGINAL IS ON FILE
IN THE ENGINEERS OFFICE.

* THIS SHEET HAS BEEN DRAWN USING COMPUTER AIDED DRAFTING/
DESIGN (CAD/D) AND COORDINATE GEOMETRY (COGO).

| REVISIONS | | | | |
|-----------|-------------------|--------|-------|-------|
| DATE | BY | LIC.NO | BLOCK | LOT |
| 2/10/09 | ARNOLD W. BARNETT | 14987 | 317 | 39.01 |
| | | | | |
| | | | | |
| | | | | |
| | | | | |

THIS MAP WAS FORMALLY
CERTIFIED BY THE
DIVISION OF TAXATION ON
SEPTEMBER 26, 2008, SIGNED
BY SANTO C. DIDONATO AND
ASSIGNED SERIAL NUMBER 926

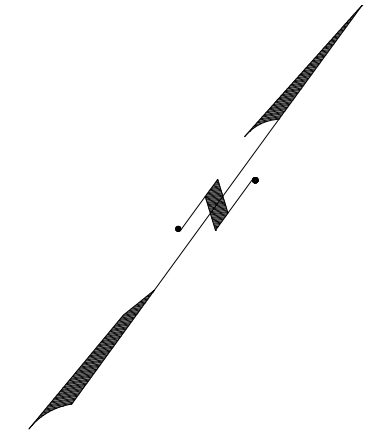
TAX MAP
TOWN OF DOVER

MORRIS COUNTY
SCALE: 1" = 100'

NEW JERSEY
DATE: JUNE 2007

ARNOLD W. BARNETT
PROFESSIONAL ENGINEER AND LAND SURVEYOR
NEW JERSEY LICENSE NO. 14987
850 SO. WHITE HORSE PIKE
HAMMONTON, NEW JERSEY 08037
CO# 24GA27973300

TO SHOW CONDITIONS AS OF JULY 2016



RANDOLPH TOWNSHIP
MORRIS COUNTY

* THIS MAP IS A COPY OF THE ORIGINAL MAP PREPARED BY
ARNOLD R. SMITH DATED 1931. THE ORIGINAL IS ON FILE
IN THE ENGINEERS OFFICE.

* THIS SHEET HAS BEEN DRAWN USING COMPUTER AIDED DRAFTING/
DESIGN (CAD/D) AND COORDINATE GEOMETRY (COGO).

| REVISIONS | | | | |
|-----------|---------------------|--------|-------|--------|
| DATE | BY | LIC NO | BLOCK | LOT |
| 2/9/09 | ARNOLD W. BARNETT | 14987 | 403 | 19,20 |
| 2/9/09 | ARNOLD W. BARNETT | 14987 | 404 | 4 |
| 2/9/09 | ARNOLD W. BARNETT | 14987 | 407 | 4,5,13 |
| 2/9/09 | ARNOLD W. BARNETT | 14987 | 408 | 9 |
| 11/24/14 | CHARLES A. ATKINSON | 33994 | 403 | 22 |
| 11/24/14 | CHARLES A. ATKINSON | 33994 | 407 | 12 |

THIS MAP WAS FORMALLY
CERTIFIED BY THE
DIVISION OF TAXATION ON
SEPTEMBER 26, 2008, SIGNED
BY SANTO C. DIDONATO AND
ASSIGNED SERIAL NUMBER 926

TAX MAP
TOWN OF DOVER

MORRIS COUNTY
SCALE: 1" = 100'

NEW JERSEY
DATE: JUNE 2007

ARNOLD W. BARNETT
PROFESSIONAL ENGINEER AND LAND SURVEYOR
NEW JERSEY LICENSE NO. 14987
850 SO. WHITE HORSE PIKE
HAMMONTON, NEW JERSEY 08037
CO# 24GA27973300

TO SHOW CONDITIONS AS OF JULY 2016

SHEET 2

SHEET 6

PARK HEIGHTS AVE

NJ STATE HIGHWAY ROUTE 46

NJ STATE HIGHWAY ROUTE 46

WEST BLACKWELL ST

BASSETT HWY

SHEET 12

DEWEY AVE

ELLIOTT ST

RANDOLPH AVE

PROSPECT ST

CHESTNUT ST

LAWRENCE ST

AMN ST

ELIZABETH ST

SPRING ST

GEORGE ST

GREEN TREE LA

BLOCK LIMIT

BLOCK LIMIT

BLOCK LIMIT

BLOCK LIMIT

BLOCK LIMIT

BLOCK LIMIT

BLOCK LIMIT

BLOCK LIMIT

12
14.34 Ac±
EXEMPT
MORRIS COUNTY PARK COMMISSION

503

11
20.46 Ac±
TOWN OF DOVER RESERVOIR

502

6
1.45 Ac±

501

(UNIMPROVED)

1.41 Ac±

500

3.03

3.02

3.01

507

8.01

508

1.01

514

1.40 Ac± (TOTAL)

509

9.01

4.01

506

17.02

17.01

17

504

(UNIMPROVED)

17.02

17.01

17

505

(UNIMPROVED)

17.02

17.01

17

515

(UNIMPROVED)

17.02

17.01

17

511

EXEMPT TOWN

1

510

CLASS II FLOODWAY

2.01

BLOCK 514 LOT 10
PROSPECT COURT CONDOMINIUMS

| UNIT # | STORIES | SQFT |
|--------|---------|------|
| C01 | 2 | 1224 |
| C02 | 2 | 1224 |
| C03 | 2 | 1224 |
| C04 | 2 | 1217 |
| C05 | 2 | 1217 |
| C06 | 2 | 1217 |
| C07 | 2 | 1217 |
| C08 | 2 | 1217 |
| C09 | 2 | 1217 |
| C10 | 2 | 1224 |
| C11 | 2 | 1224 |
| C12 | 2 | 1224 |
| C13 | 2 | 1224 |
| C14 | 2 | 1224 |
| C15 | 2 | 1224 |
| C16 | 2 | 1224 |

DETAIL "A"
BLOCK 514 LOT 5

| UNIT # | STORY | SQFT |
|--------|-------|------|
| C01 | 2 | 1120 |
| C02 | 2 | 1120 |

DETAIL "B"
BLOCK 513 LOT 18

| UNIT # | STORY | SQFT |
|--------|-------|------|
| C01 | 2 | 918 |
| C02 | 2 | 918 |

DETAIL "C"

THIS MAP WAS FORMALLY
CERTIFIED BY THE
DIVISION OF TAXATION ON
SEPTEMBER 26, 2008, SIGNED
BY SANTO C. DIDONATO AND
ASSIGNED SERIAL NUMBER 926

TAX MAP
TOWN OF DOVER

ARNOLD W. BARNETT

PROFESSIONAL ENGINEER AND LAND SURVEYOR
NEW JERSEY LICENSE NO. 14987
650 SO. WHITE HORSE PIKE
HAMMONTON, NEW JERSEY 08037
COA# 24GA27973300

NEW JERSEY
DATE: JUNE 2007

MORRIS COUNTY
SCALE: 1" = 100'

TO SHOW CONDITIONS AS OF JULY 2016

SHEET 4

SHEET 11

* THIS MAP IS A COPY OF THE ORIGINAL MAP PREPARED BY
ARNOLD W. BARNETT DATED 1931. THE ORIGINAL IS ON FILE
IN THE ENGINEERS OFFICE.

* THIS SHEET HAS BEEN DRAWN USING COMPUTER AIDED DRAFTING/
DESIGN (CAD/D) AND COORDINATE GEOMETRY (COGO).

| REVISIONS | | | | |
|-----------|---------------------|----------|-------|-------------------|
| DATE | BY | LIC. NO. | BLOCK | LOT |
| 2/10/09 | ARNOLD W. BARNETT | 14987 | 507 | 8.01, 9.01, 10.01 |
| 2/10/09 | ARNOLD W. BARNETT | 14987 | 513 | 14.01 |
| 2/10/09 | ARNOLD W. BARNETT | 14987 | 503 | 7.01-9.01, 11.01 |
| 2/10/09 | ARNOLD W. BARNETT | 14987 | 510 | 1.01 |
| 2/10/09 | ARNOLD W. BARNETT | 14987 | 514 | 14 |
| 10/2010 | CHARLES A. ATKINSON | 33994 | 501 | 1.01 |

SHEET 7

SHEET 14

| REVISIONS | | | | |
|-----------|---------------------|--------|-------|----------|
| DATE | BY | LIC.NO | BLOCK | LOT |
| 2/10/09 | ARNOLD W. BARNETT | 14987 | 601 | 1.01 |
| 2/10/09 | ARNOLD W. BARNETT | 14987 | 606 | 17.01 |
| 2/10/09 | ARNOLD W. BARNETT | 14987 | 610 | 11,12,13 |
| 2/10/09 | ARNOLD W. BARNETT | 14987 | 611 | 2-6,7,01 |
| 2/10/09 | ARNOLD W. BARNETT | 14987 | 615 | 3.01 |
| 3/02/09 | ARNOLD W. BARNETT | 14987 | 603 | 1 |
| 10/2/2010 | CHARLES A. ATKINSON | 33994 | 510 | 5 |
| 10/2/2010 | CHARLES A. ATKINSON | 33994 | 611 | 2 |
| 12/2014 | CHARLES A. ATKINSON | 33994 | 610 | 9 |

DETAIL "A"
SCALE: 1"=50'

606

GOODALE AVE

608

CENTRAL AVE

609

602

603

604

605

606

607

608

609

610

611

612

613

614

615

| BLOCK 603 LOT 1 RICHBOYNTON RD CONDOMINIUMS | | |
|--|---------|-------|
| UNIT # | STORIES | SQFT |
| C22 | 1 | 41514 |
| C24 | 1 | 18393 |
| C26 | 1 | 29026 |
| C28 | 1 | 10607 |
| C30 | 1 | 6928 |
| C32 | 1 | 2795 |
| *C34 | 1 | 4496 |
| C36.1 | 1 | 8887 |
| C36.2 | 1 | 12220 |
| C38 | 1 | 6990 |
| C40 | 1 | 7220 |
| C42 | 1 | 8737 |
| C44 | 1 | 5267 |

DETAIL "C"
* - EXEMPT TOWN SQUARE INDUSTRIAL CENTER, LLC

DETAIL "B"
SCALE: 1"=50'

SHEET 14

SHEET 13

SHEET 3

SHEET 5

SHEET 12

* THIS MAP IS A COPY OF THE ORIGINAL MAP PREPARED BY ARNOLD R. SMITH DATED 1931. THE ORIGINAL IS ON FILE IN THE ENGINEERS OFFICE.

* THIS SHEET HAS BEEN DRAWN USING COMPUTER AIDED DRAFTING/DESIGN (CAD/D) AND COORDINATE GEOMETRY (COGO).

THIS MAP WAS FORMALLY CERTIFIED BY THE DIVISION OF TAXATION ON SEPTEMBER 26, 2008, SIGNED BY SANTO C. DIDONATO AND ASSIGNED SERIAL NUMBER 926

MORRIS COUNTY
SCALE: 1" = 100'

NEW JERSEY
DATE: JUNE 2007

TAX MAP
TOWN OF DOVER

ARNOLD W. BARNETT

PROFESSIONAL ENGINEER AND LAND SURVEYOR
NEW JERSEY LICENSE NO. 14987
850 SO. WHITE HORSE PIKE
HAMMONTON, NEW JERSEY 08037
CO# 24GA27973300

TO SHOW CONDITIONS AS OF JULY 2016

| REVISIONS | | | | |
|-----------|---------------------|--------|-------|-------------|
| DATE | BY | LIC.NO | BLOCK | LOT |
| 2/10/09 | ARNOLD W. BARNETT | 14987 | 707 | 13 |
| 2/10/09 | ARNOLD W. BARNETT | 14987 | 710 | 7,01 |
| 3/02/09 | ARNOLD W. BARNETT | 14987 | 603 | 1 |
| 10/20/10 | CHARLES A. ATKINSON | 33994 | 707 | 12 |
| 12/2/14 | CHARLES A. ATKINSON | 33994 | 707 | 13,13.01 |
| 12/2/14 | CHARLES A. ATKINSON | 33994 | 709 | 13.01,13.02 |
| 12/2/14 | CHARLES A. ATKINSON | 33994 | 710 | 7.01,7.02 |
| 12/2/14 | CHARLES A. ATKINSON | 33994 | 711 | 31 |

BOROUGH OF WHARTON
MORRIS COUNTY

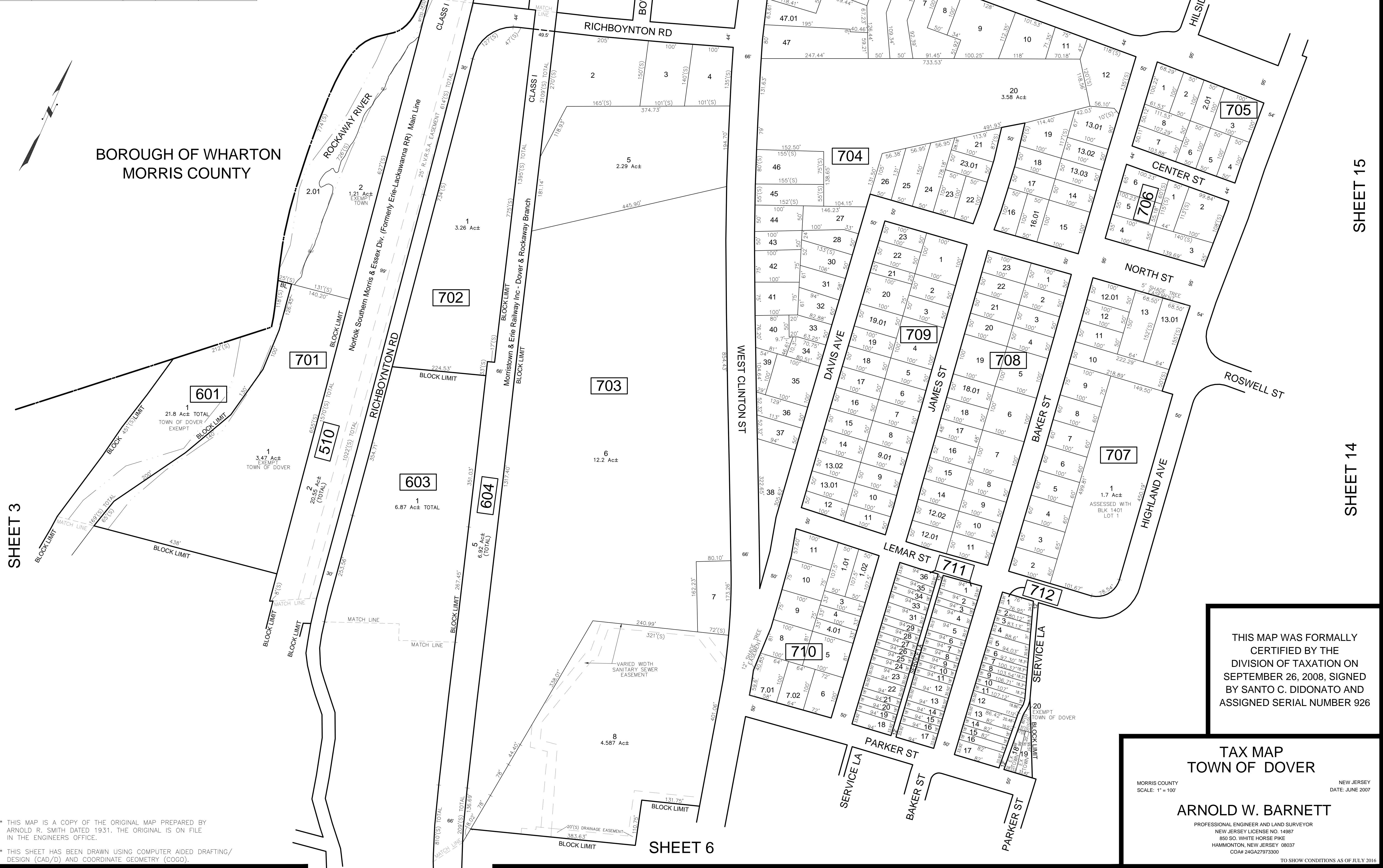
SHEET 8

SHEET 8

SHEET 3

SHEET 15

SHEET 14



THIS MAP WAS FORMALLY
CERTIFIED BY THE
DIVISION OF TAXATION ON
SEPTEMBER 26, 2008, SIGNED
BY SANTO C. DIDONATO AND
ASSIGNED SERIAL NUMBER 926

TAX MAP
TOWN OF DOVER

MORRIS COUNTY
SCALE: 1" = 100'

NEW JERSEY
DATE: JUNE 2007

ARNOLD W. BARNETT

PROFESSIONAL ENGINEER AND LAND SURVEYOR
NEW JERSEY LICENSE NO. 14987
850 SO. WHITE HORSE PIKE
HAMMONTON, NEW JERSEY 08037
CO#A# 24GA27973300

* THIS MAP IS A COPY OF THE ORIGINAL MAP PREPARED BY
ARNOLD R. SMITH DATED 1931. THE ORIGINAL IS ON FILE
IN THE ENGINEERS OFFICE.

* THIS SHEET HAS BEEN DRAWN USING COMPUTER AIDED DRAFTING/
DESIGN (CAD/D) AND COORDINATE GEOMETRY (COGO).

| REVISIONS | | | | |
|-----------|--------------------|--------|-------|-----------|
| DATE | BY | LIC.NO | BLOCK | LOT |
| 2/10/09 | ARNOLD W. BARNETT | 14987 | 828 | 1.01-2.02 |
| 3/16/09 | ARNOLD W. BARNETT | 14987 | 806 | 9,9.01 |
| 4/29/09 | ARNOLD W. BARNETT | 14987 | 828 | 2.01-2.02 |
| 12/2014 | CHARLES A ATKINSON | 33994 | 830 | 1.01-1.04 |
| 12/2014 | CHARLES A ATKINSON | 33994 | 832 | 1.01-1.04 |

BOROUGH OF WHARTON
MORRIS COUNTY

ROCKAWAY TOWNSHIP
MORRIS COUNTY

14' 27' 22' 25'

UNITS 2-4 UNITS 10 A&B
UNITS 6-8

| BLOCK 803 LOT 9 | | |
|-----------------|---------|------|
| UNIT# | STORIES | SQFT |
| C02 | 2 | 742 |
| C04 | 2 | 742 |
| C06 | 2 | 742 |
| C08 | 2 | 742 |
| C10(A&B) | 2 | 1104 |

DETAIL "A"

| BLOCK 812 LOT 1 | | |
|-----------------|---------|------|
| UNIT# | STORIES | SQFT |
| C01 | 2 | 1392 |
| C02 | 2 | 1313 |
| C03 | 2 | 1378 |
| C04 | 2 | 1354 |
| C05 | 2 | 1332 |
| C06 | 2 | 1530 |
| C07 | 2 | 1385 |
| C08 | 2 | 1220 |

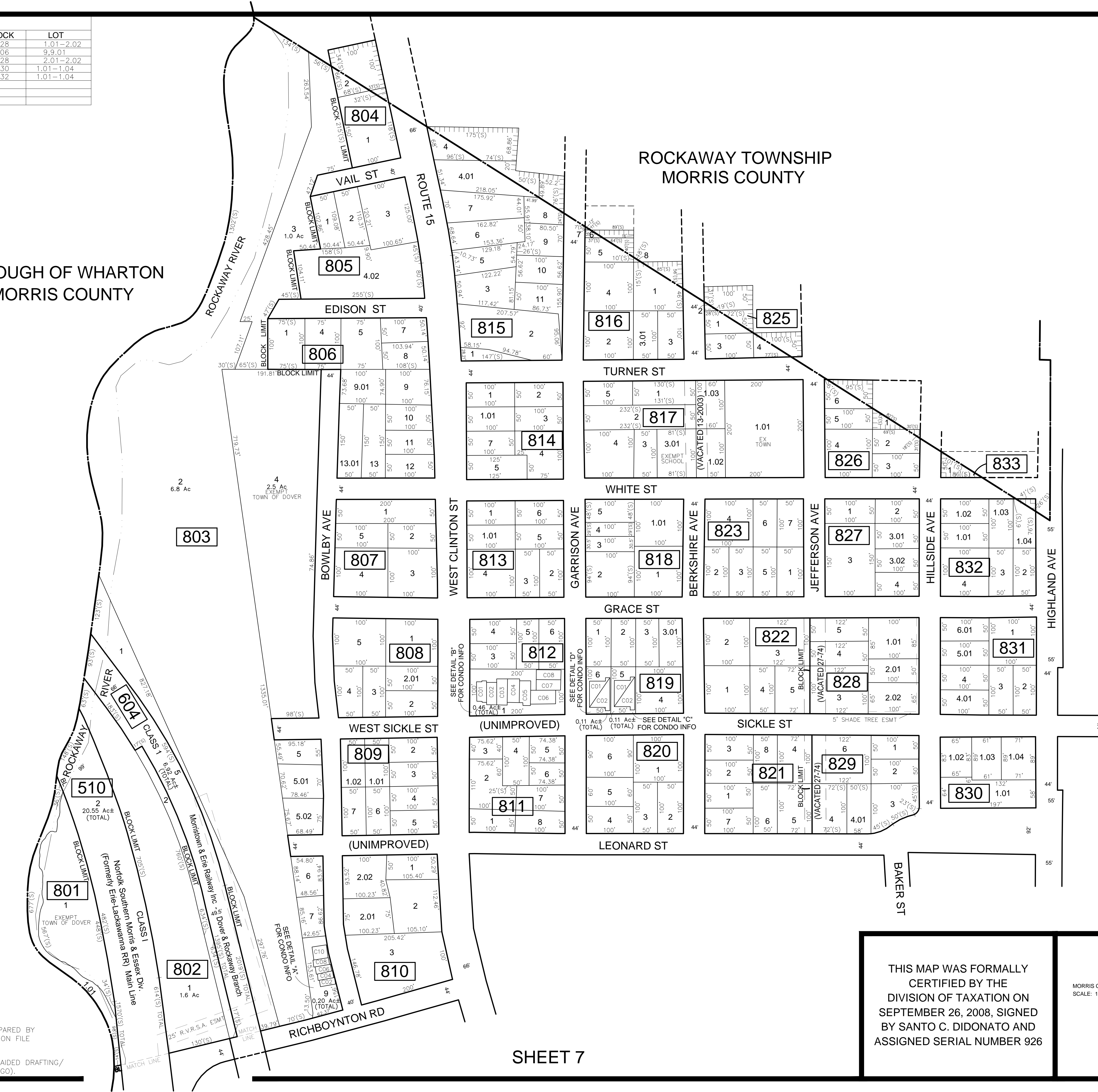
DETAIL "B"

| BLOCK 819 LOT 5 | | |
|-----------------|---------|------|
| UNIT# | STORIES | SQFT |
| C01 | 2 | 1020 |
| C02 | 2 | 1020 |

DETAIL "C"

| BLOCK 819 LOT 6 | | |
|-----------------|---------|------|
| UNIT# | STORIES | SQFT |
| C01 | 2 | 960 |
| C02 | 2 | 960 |

DETAIL "D"



* THIS MAP IS A COPY OF THE ORIGINAL MAP PREPARED BY ARNOLD R. SMITH DATED 1931. THE ORIGINAL IS ON FILE IN THE ENGINEERS OFFICE.

* THIS SHEET HAS BEEN DRAWN USING COMPUTER AIDED DRAFTING/ DESIGN (CAD/D) AND COORDINATE GEOMETRY (COGO).

SHEET 7

SHEET 15

THIS MAP WAS FORMALLY
CERTIFIED BY THE
DIVISION OF TAXATION ON
SEPTEMBER 26, 2008, SIGNED
BY SANTO C. DIDONATO AND
ASSIGNED SERIAL NUMBER 926

TAX MAP
TOWN OF DOVER

MORRIS COUNTY
SCALE: 1" = 100'

NEW JERSEY
DATE: JUNE 2007

ARNOLD W. BARNETT
PROFESSIONAL ENGINEER AND LAND SURVEYOR
NEW JERSEY LICENSE NO. 14987
850 SO. WHITE HORSE PIKE
HAMMONTON, NEW JERSEY 08037
CO#A# 24GA27973300

TO SHOW CONDITIONS AS OF JULY 2016

MORRIS COUNTY
ROCKAWAY TOWNSHIP

MT PLEASANT AVE (ALSO KNOWN AS FROGTOWN RD)

BOROUGH OF WHARTON
MORRIS COUNTY

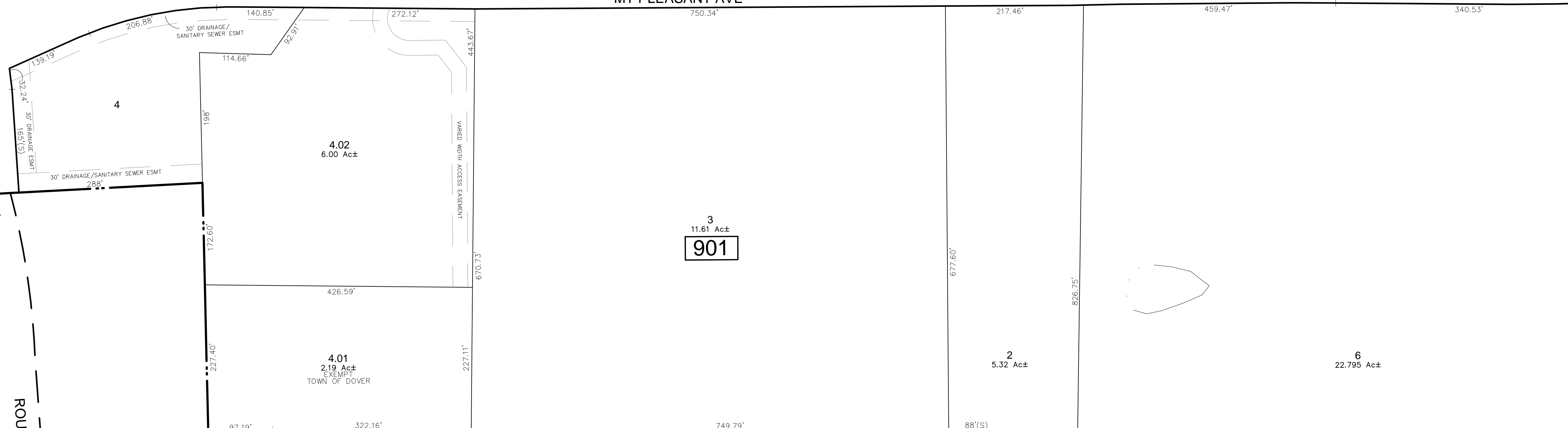
ROUTE 15

W CLINTON ST

NORTH ST

HIGHLAND AVE

SHEET 16



ROCKAWAY TOWNSHIP
MORRIS COUNTY

ROCKAWAY TOWNSHIP
MORRIS COUNTY

TOWN OF DOVER
MORRIS COUNTY

SHEET 16

TOWN OF DOVER
MORRIS COUNTY

SHEET 8

SHEET 15

* THIS MAP IS A COPY OF THE ORIGINAL MAP PREPARED BY
ARNOLD R. SMITH DATED 1931. THE ORIGINAL IS ON FILE
IN THE ENGINEERS OFFICE.

* THIS SHEET HAS BEEN DRAWN USING COMPUTER AIDED DRAFTING/
DESIGN (CAD/D) AND COORDINATE GEOMETRY (COGO).

| REVISIONS | | | | |
|-----------|-------------------|--------|-------|-----|
| DATE | BY | LIC.NO | BLOCK | LOT |
| | ARNOLD W. BARNETT | 14987 | | |
| | | | | |
| | | | | |
| | | | | |
| | | | | |

THIS MAP WAS FORMALLY
CERTIFIED BY THE
DIVISION OF TAXATION ON
SEPTEMBER 26, 2008, SIGNED
BY SANTO C. DIDONATO AND
ASSIGNED SERIAL NUMBER 926

MORRIS COUNTY
SCALE: 1" = 100'

NEW JERSEY
DATE: JUNE 2007

TAX MAP
TOWN OF DOVER

ARNOLD W. BARNETT

PROFESSIONAL ENGINEER AND LAND SURVEYOR
NEW JERSEY LICENSE NO. 14987
850 SO. WHITE HORSE PIKE
HAMMONTON, NEW JERSEY 08037
CO# 24GA27973300

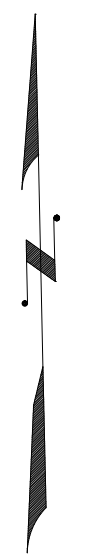
TO SHOW CONDITIONS AS OF JULY 2016

SHEET 4

SHEET 11

SHEET 18

SHEET 17



| BLOCK 1007 LOT 3 | | |
|------------------|---------|------|
| UNIT# | STORIES | SQFT |
| C01 | 2 | 1504 |
| C02 | 2 | 1388 |

DETAIL "A"

| BLOCK 1011 LOT 2 | | |
|------------------|---------|------|
| UNIT# | STORIES | SQFT |
| C01 | 2 | 1224 |
| C02 | 2 | 1224 |

DETAIL "B"

SHEET 4



* THIS MAP IS A COPY OF THE ORIGINAL MAP PREPARED BY ARNOLD R. SMITH DATED 1931. THE ORIGINAL IS ON FILE IN THE ENGINEERS OFFICE.

* THIS SHEET HAS BEEN DRAWN USING COMPUTER AIDED DRAFTING/ DESIGN (CAD/D) AND COORDINATE GEOMETRY (COGO).

RANDOLPH TOWNSHIP
MORRIS COUNTY

RANDOLPH TOWNSHIP
MORRIS COUNTY

| REVISIONS | | | | |
|-----------|-------------------|--------|-------|-------|
| DATE | BY | LIC.NO | BLOCK | LOT |
| 2/10/09 | ARNOLD W. BARNETT | 14987 | 1019 | 24 |
| 2/10/09 | ARNOLD W. BARNETT | 14987 | 1017 | 10,01 |
| 2/10/09 | ARNOLD W. BARNETT | 14987 | 1016 | 1 |

THIS MAP WAS FORMALLY CERTIFIED BY THE DIVISION OF TAXATION ON SEPTEMBER 26, 2008, SIGNED BY SANTO C. DIDONATO AND ASSIGNED SERIAL NUMBER 926

TAX MAP
TOWN OF DOVER

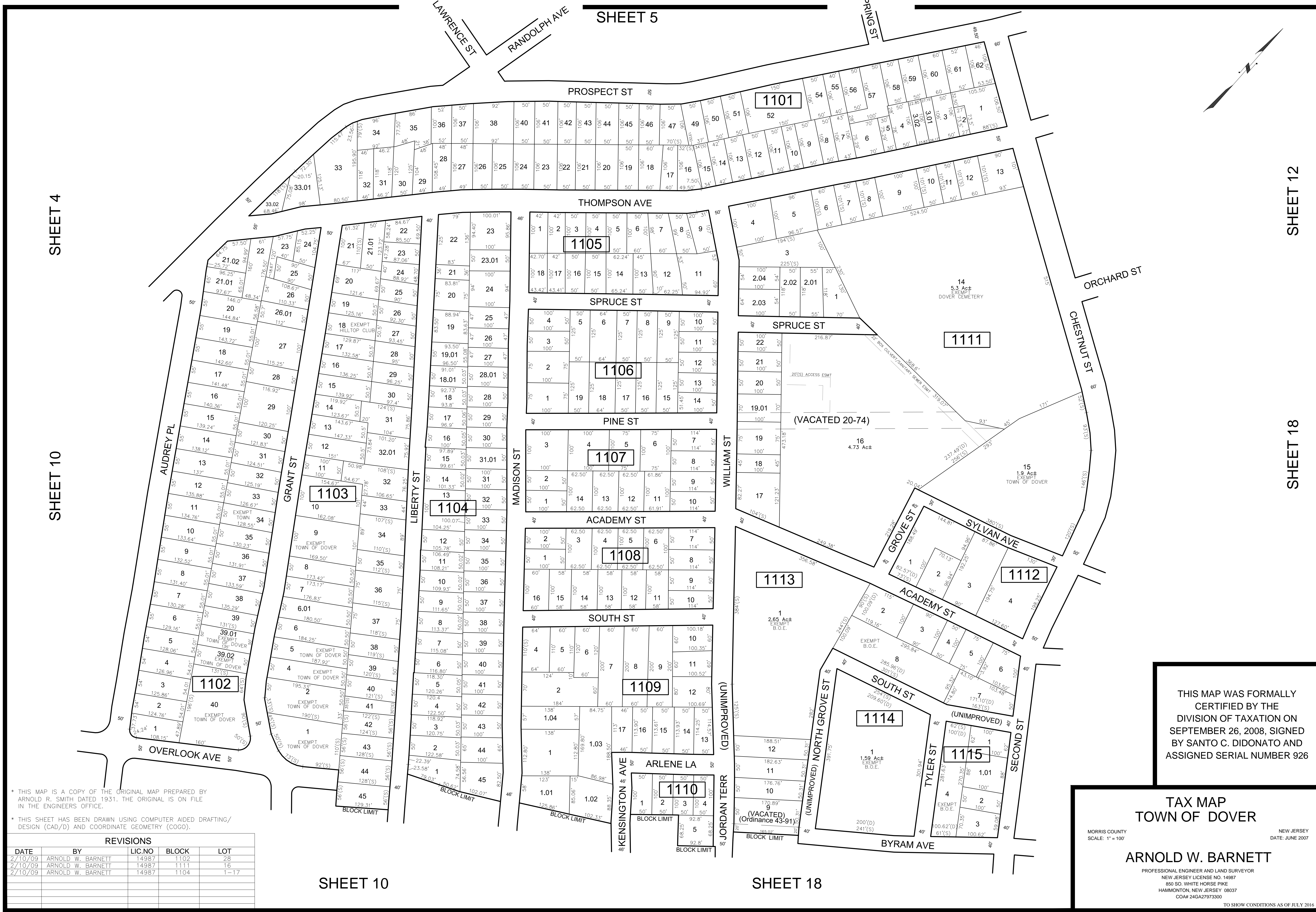
MORRIS COUNTY
SCALE: 1" = 100'

NEW JERSEY
DATE: JUNE 2007

ARNOLD W. BARNETT
PROFESSIONAL ENGINEER AND LAND SURVEYOR
NEW JERSEY LICENSE NO. 14987
850 SO. WHITE HORSE PIKE
HAMMONTON, NEW JERSEY 08037
CO# 24GA27973300

TO SHOW CONDITIONS AS OF JULY 2016

SHEET 5



SHEET 4

SHEET 10

SHEET 12

SHEET 18

* THIS MAP IS A COPY OF THE ORIGINAL MAP PREPARED BY ARNOLD W. BARNETT DATED 1931. THE ORIGINAL IS ON FILE IN THE ENGINEER'S OFFICE.

* THIS SHEET HAS BEEN DRAWN USING COMPUTER AIDED DRAFTING/DESIGN (CAD/D) AND COORDINATE GEOMETRY (COGO).

| REVISIONS | | | | |
|-----------|-------------------|--------|-------|------|
| DATE | BY | LIC NO | BLOCK | LOT |
| 2/10/09 | ARNOLD W. BARNETT | 14987 | 1102 | 28 |
| 2/10/09 | ARNOLD W. BARNETT | 14987 | 1111 | 16 |
| 2/10/09 | ARNOLD W. BARNETT | 14987 | 1104 | 1-17 |

SHEET 10

SHEET 18

THIS MAP WAS FORMALLY CERTIFIED BY THE DIVISION OF TAXATION ON SEPTEMBER 26, 2008, SIGNED BY SANTO C. DIDONATO AND ASSIGNED SERIAL NUMBER 926

TAX MAP
TOWN OF DOVER

MORRIS COUNTY
SCALE: 1" = 100'

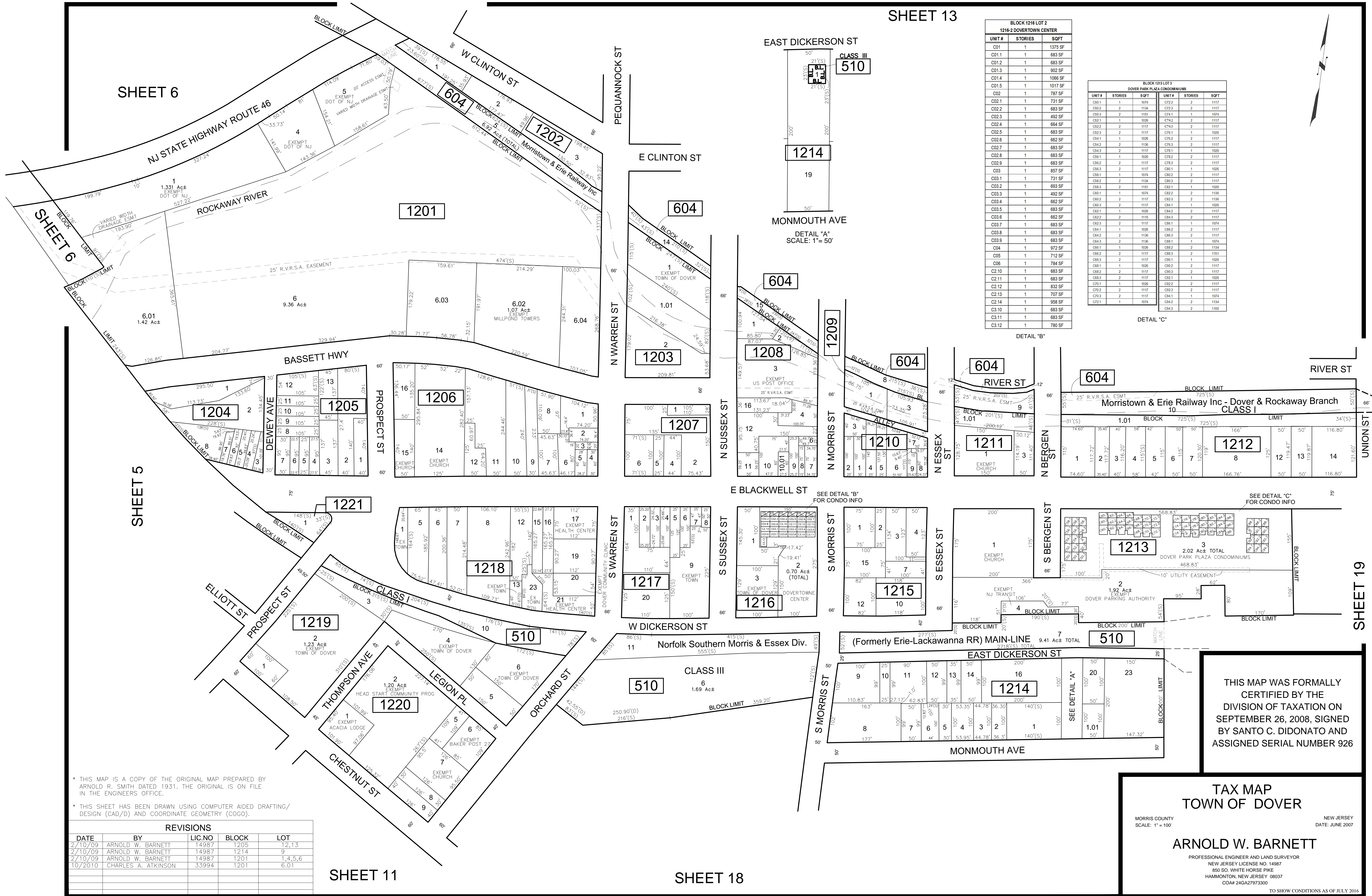
NEW JERSEY
DATE: JUNE 2007

ARNOLD W. BARNETT

PROFESSIONAL ENGINEER AND LAND SURVEYOR
NEW JERSEY LICENSE NO. 14987
850 SO. WHITE HORSE PIKE
HAMMONTON, NEW JERSEY 08037
CO# 24GA27973300

TO SHOW CONDITIONS AS OF JULY 2016

SHEET 13



BLOCK 1216 LOT 2
1216-2 DOVERTOWN CENTER

| UNIT # | STORIES | SQFT |
|--------|---------|---------|
| C01 | 1 | 1375 SF |
| C01.1 | 1 | 683 SF |
| C01.2 | 1 | 683 SF |
| C01.3 | 1 | 902 SF |
| C01.4 | 1 | 1066 SF |
| C01.5 | 1 | 1017 SF |
| C02 | 1 | 787 SF |
| C02.1 | 1 | 731 SF |
| C02.2 | 1 | 683 SF |
| C02.3 | 1 | 492 SF |
| C02.4 | 1 | 664 SF |
| C02.5 | 1 | 683 SF |
| C02.6 | 1 | 662 SF |
| C02.7 | 1 | 683 SF |
| C02.8 | 1 | 683 SF |
| C02.9 | 1 | 683 SF |
| C03 | 1 | 857 SF |
| C03.1 | 1 | 731 SF |
| C03.2 | 1 | 693 SF |
| C03.3 | 1 | 492 SF |
| C03.4 | 1 | 662 SF |
| C03.5 | 1 | 683 SF |
| C03.6 | 1 | 662 SF |
| C03.7 | 1 | 683 SF |
| C03.8 | 1 | 683 SF |
| C03.9 | 1 | 683 SF |
| C04 | 1 | 972 SF |
| C05 | 1 | 712 SF |
| C06 | 1 | 784 SF |
| C2.10 | 1 | 683 SF |
| C2.11 | 1 | 683 SF |
| C2.12 | 1 | 832 SF |
| C2.13 | 1 | 707 SF |
| C2.14 | 1 | 958 SF |
| C3.10 | 1 | 683 SF |
| C3.11 | 1 | 683 SF |
| C3.12 | 1 | 780 SF |

BLOCK 1213 LOT 3
DOVER PARK PLAZA CONDOMINIUMS

| UNIT # | STORIES | SQFT | UNIT # | STORIES | SQFT |
|--------|---------|------|--------|---------|------|
| C90.1 | 1 | 974 | C72.2 | 2 | 1117 |
| C90.2 | 2 | 1134 | C72.3 | 2 | 1117 |
| C90.3 | 2 | 1151 | C74.1 | 1 | 1074 |
| C92.1 | 1 | 926 | C74.2 | 2 | 1117 |
| C92.2 | 2 | 1117 | C74.3 | 2 | 1117 |
| C92.3 | 2 | 1117 | C76.1 | 1 | 1026 |
| C92.4 | 2 | 1117 | C81.1 | 1 | 1026 |
| C94.2 | 2 | 1136 | C76.3 | 2 | 1117 |
| C94.3 | 2 | 1117 | C76.1 | 1 | 1026 |
| C96.1 | 1 | 926 | C78.2 | 2 | 1117 |
| C96.2 | 2 | 1117 | C78.3 | 2 | 1117 |
| C96.3 | 2 | 1117 | C82.2 | 2 | 1117 |
| C98.1 | 1 | 974 | C82.3 | 2 | 1117 |
| C98.2 | 2 | 1134 | C83.2 | 2 | 1117 |
| C98.3 | 2 | 1151 | C81.1 | 1 | 1026 |
| C99.1 | 1 | 974 | C82.2 | 2 | 1117 |
| C99.2 | 2 | 1136 | C82.3 | 2 | 1117 |
| C99.3 | 2 | 1117 | C84.1 | 1 | 1026 |
| C99.4 | 2 | 1136 | C84.2 | 2 | 1117 |
| C99.5 | 2 | 1115 | C84.3 | 2 | 1117 |
| C99.6 | 2 | 1117 | C81.1 | 1 | 1026 |
| C99.7 | 2 | 1117 | C82.2 | 2 | 1117 |
| C99.8 | 2 | 1117 | C82.3 | 2 | 1117 |
| C99.9 | 2 | 1136 | C83.2 | 2 | 1117 |
| C99.10 | 2 | 1136 | C83.3 | 2 | 1117 |
| C99.11 | 1 | 926 | C82.2 | 2 | 1117 |
| C99.12 | 2 | 1117 | C82.3 | 2 | 1117 |
| C99.13 | 2 | 1117 | C84.1 | 1 | 1026 |
| C99.14 | 2 | 1134 | C84.2 | 2 | 1117 |
| C99.15 | 2 | 1134 | C84.3 | 2 | 1117 |
| C99.16 | 2 | 1117 | C81.1 | 1 | 1026 |
| C99.17 | 2 | 1117 | C82.2 | 2 | 1117 |
| C99.18 | 2 | 1117 | C82.3 | 2 | 1117 |
| C99.19 | 2 | 1136 | C83.2 | 2 | 1117 |
| C99.20 | 2 | 1136 | C83.3 | 2 | 1117 |
| C99.21 | 1 | 926 | C82.2 | 2 | 1117 |
| C99.22 | 2 | 1117 | C82.3 | 2 | 1117 |
| C99.23 | 2 | 1117 | C84.1 | 1 | 1026 |
| C99.24 | 2 | 1134 | C84.2 | 2 | 1117 |
| C99.25 | 2 | 1134 | C84.3 | 2 | 1117 |

DETAIL 'B'

DETAIL 'C'

* THIS MAP IS A COPY OF THE ORIGINAL MAP PREPARED BY ARNOLD W. BARNETT DATED 1931. THE ORIGINAL IS ON FILE IN THE ENGINEERS OFFICE.

* THIS SHEET HAS BEEN DRAWN USING COMPUTER AIDED DRAFTING/DESIGN (CAD/D) AND COORDINATE GEOMETRY (COGO).

REVISIONS

| DATE | BY | LIC. NO. | BLOCK | LOT |
|---------|---------------------|----------|-------|---------|
| 2/10/09 | ARNOLD W. BARNETT | 14987 | 1205 | 1,2,1,3 |
| 2/10/09 | ARNOLD W. BARNETT | 14987 | 1214 | 9 |
| 2/10/09 | ARNOLD W. BARNETT | 14987 | 1201 | 1,4,5,6 |
| 10/2010 | CHARLES A. ATKINSON | 33994 | 1201 | 6.01 |

THIS MAP WAS FORMALLY CERTIFIED BY THE DIVISION OF TAXATION ON SEPTEMBER 26, 2008, SIGNED BY SANTO C. DIDONATO AND ASSIGNED SERIAL NUMBER 926

TAX MAP
TOWN OF DOVER

MORRIS COUNTY
SCALE: 1" = 100'

NEW JERSEY
DATE: JUNE 2007

ARNOLD W. BARNETT
PROFESSIONAL ENGINEER AND LAND SURVEYOR
NEW JERSEY LICENSE NO. 14987
850 SO. WHITE HORSE PIKE
HAMMONTON, NEW JERSEY 08037
CO# 24GA27973300

TO SHOW CONDITIONS AS OF JULY 2016

SHEET 6

SHEET 5

SHEET 11

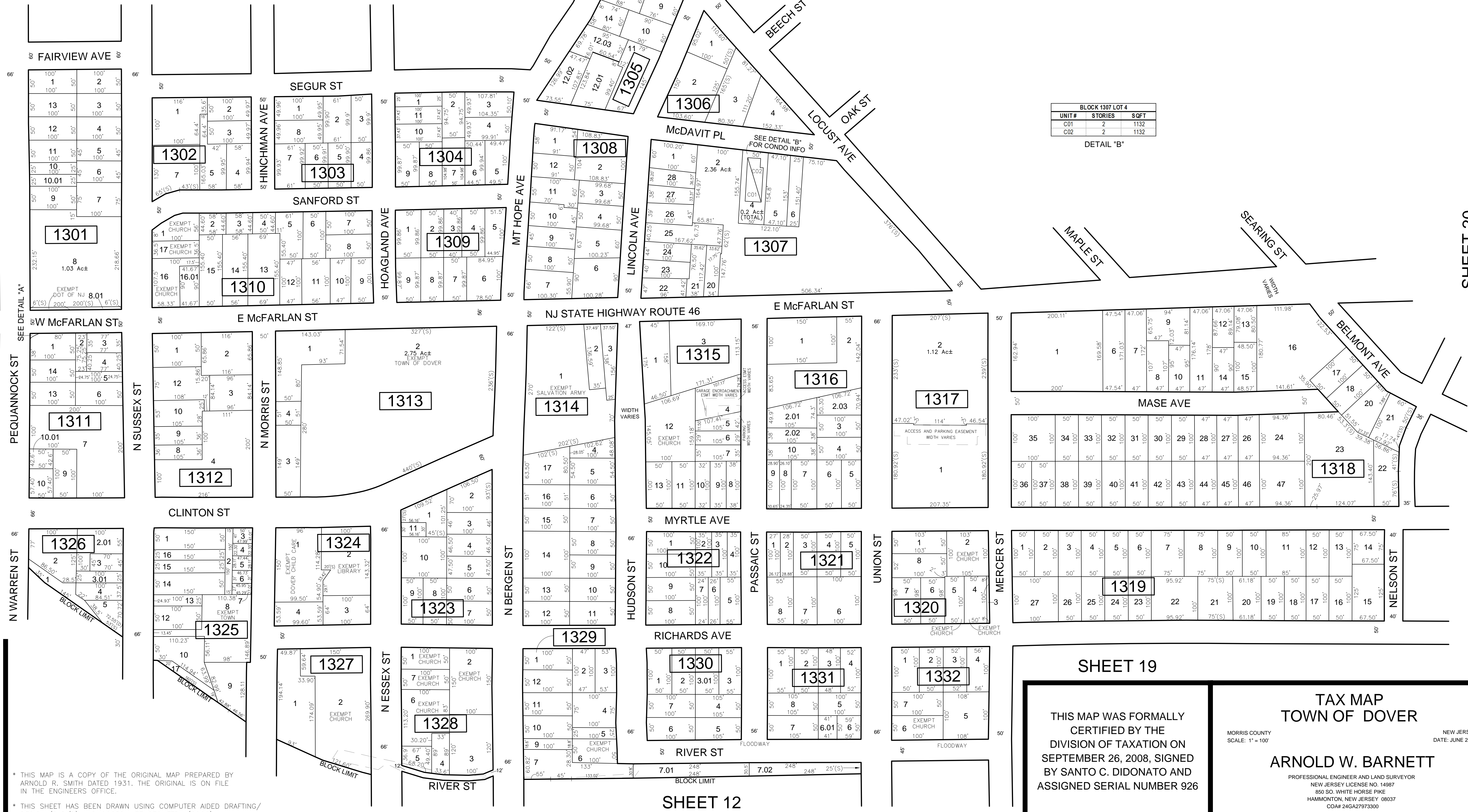
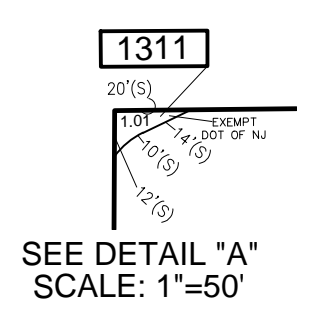
SHEET 18

SHEET 19

| REVISIONS | | | | |
|-----------|---------------------|--------|-------|-------|
| DATE | BY | LIC.NO | BLOCK | LOT |
| 2/10/09 | ARNOLD W. BARNETT | 14987 | 1323 | |
| 2/10/09 | ARNOLD W. BARNETT | 14987 | 1311 | 1,01 |
| 2/10/09 | ARNOLD W. BARNETT | 14987 | 1301 | 8,01 |
| 2/10/09 | ARNOLD W. BARNETT | 14987 | 1315 | 4,5 |
| 3/14/09 | ARNOLD W. BARNETT | 14987 | 1321 | 6 |
| 10/2010 | CHARLES A. ATKINSON | 33994 | 1305 | 12-13 |

SHEET 14

SHEET 20



SHEET 6

SHEET 12

SHEET 20

* THIS MAP IS A COPY OF THE ORIGINAL MAP PREPARED BY ARNOLD R. SMITH DATED 1931. THE ORIGINAL IS ON FILE IN THE ENGINEERS OFFICE.

* THIS SHEET HAS BEEN DRAWN USING COMPUTER AIDED DRAFTING/ DESIGN (CAD/D) AND COORDINATE GEOMETRY (COGO).

SHEET 19

THIS MAP WAS FORMALLY CERTIFIED BY THE DIVISION OF TAXATION ON SEPTEMBER 26, 2008, SIGNED BY SANTO C. DIDONATO AND ASSIGNED SERIAL NUMBER 926

TAX MAP
TOWN OF DOVER

MORRIS COUNTY
SCALE: 1" = 100'

NEW JERSEY
DATE: JUNE 2007

ARNOLD W. BARNETT
PROFESSIONAL ENGINEER AND LAND SURVEYOR
NEW JERSEY LICENSE NO. 14987
850 SO. WHITE HORSE PIKE
HAMMONTON, NEW JERSEY 08037
CO#A-24GA2973300

TO SHOW CONDITIONS AS OF JULY 2016

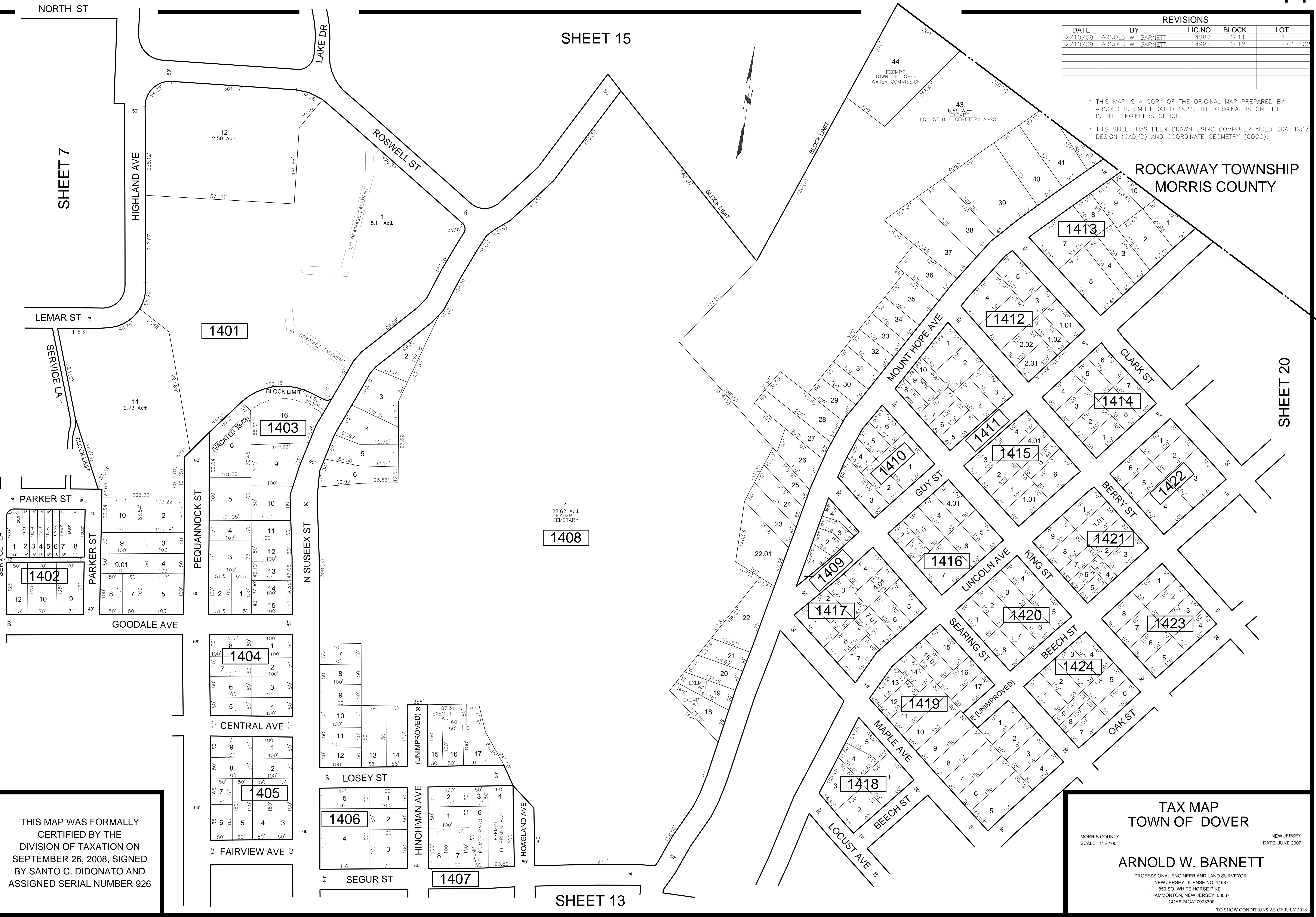
| REVISIONS | | | | |
|-----------|-------------------|--------|-------|-----------|
| DATE | BY | LIC.NO | BLOCK | LOT |
| 2/10/09 | ARNOLD W. BARNETT | 14987 | 1411 | 1 |
| 2/10/09 | ARNOLD W. BARNETT | 14987 | 1412 | 2,01,2,02 |
| | | | | |
| | | | | |
| | | | | |

* THIS MAP IS A COPY OF THE ORIGINAL MAP PREPARED BY ARNOLD R. SMITH DATED 1931. THE ORIGINAL IS ON FILE IN THE ENGINEERS OFFICE.

* THIS SHEET HAS BEEN DRAWN USING COMPUTER AIDED DRAFTING/ DESIGN (CAD/D) AND COORDINATE GEOMETRY (COGO).

SHEET 15

ROCKAWAY TOWNSHIP
MORRIS COUNTY



SHEET 6

SHEET 20

1408

1401

1403

1402

1404

1405

1406

1407

1417

1419

1410

1411

1412

1413

1414

1415

1416

1420

1421

1422

1423

1424

THIS MAP WAS FORMALLY CERTIFIED BY THE DIVISION OF TAXATION ON SEPTEMBER 26, 2008, SIGNED BY SANTO C. DIDONATO AND ASSIGNED SERIAL NUMBER 926

TAX MAP
TOWN OF DOVER

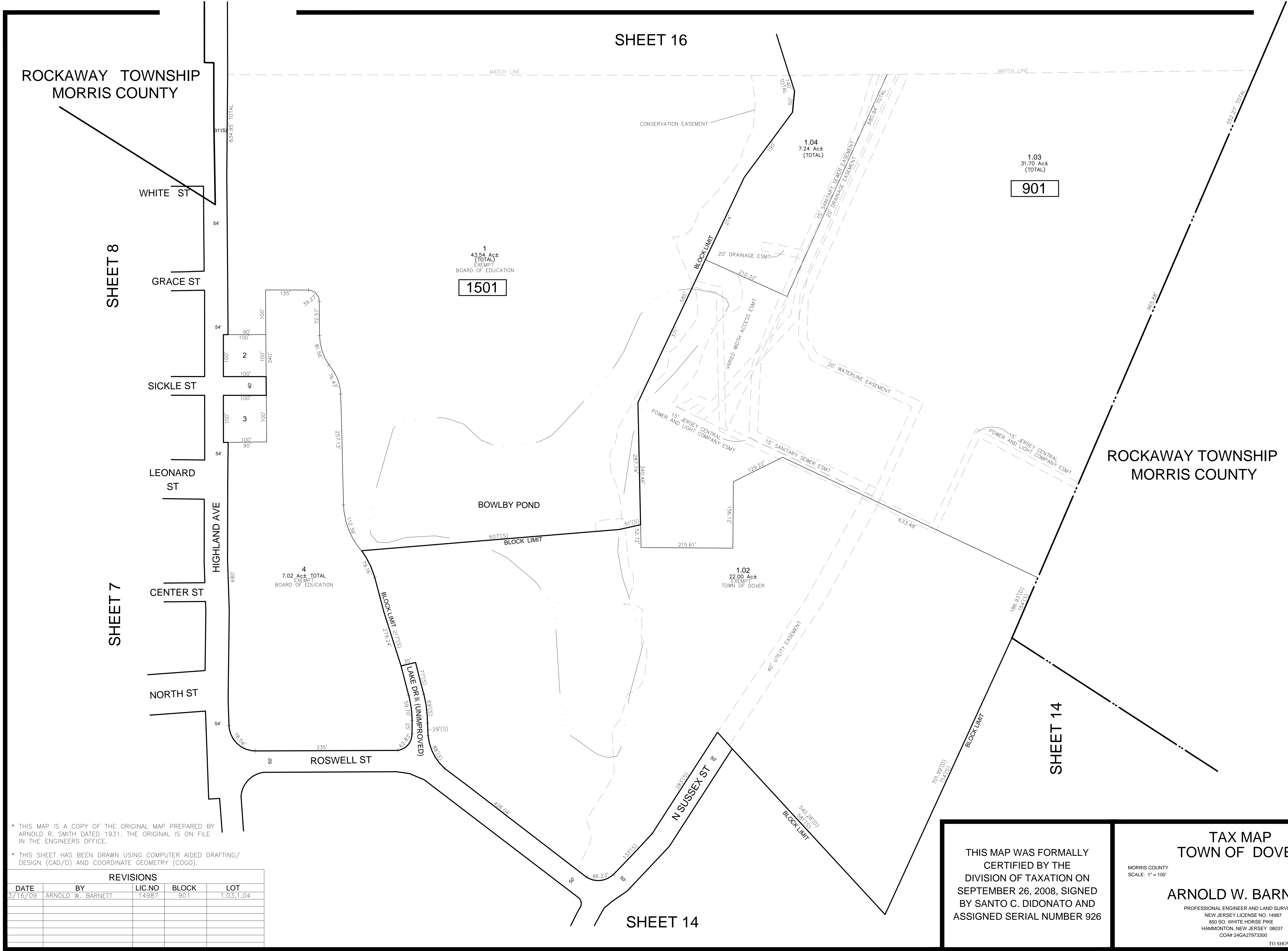
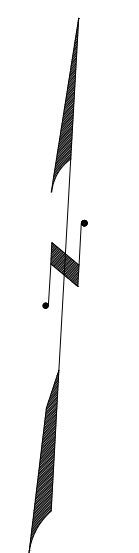
MORRIS COUNTY
SCALE: 1" = 100'

NEW JERSEY
DATE: JUNE 2007

ARNOLD W. BARNETT
PROFESSIONAL ENGINEER AND LAND SURVEYOR
NEW JERSEY LICENSE NO. 14987
850 SO. WHITE HORSE PIKE
HAMMONTON, NEW JERSEY 08037
CO# 24GA27973300

TO SHOW CONDITIONS AS OF JULY 2016

SHEET 13



ROCKAWAY TOWNSHIP
MORRIS COUNTY

ROCKAWAY TOWNSHIP
MORRIS COUNTY

SHEET 8

SHEET 7

SHEET 14

SHEET 16

SHEET 14

* THIS MAP IS A COPY OF THE ORIGINAL MAP PREPARED BY
ARNOLD R. SMITH DATED 1931. THE ORIGINAL IS ON FILE
IN THE ENGINEERS OFFICE.

* THIS SHEET HAS BEEN DRAWN USING COMPUTER AIDED DRAFTING/
DESIGN (CAD/D) AND COORDINATE GEOMETRY (COGO).

| REVISIONS | | | | |
|-----------|-------------------|--------|-------|-----------|
| DATE | BY | LIC.NO | BLOCK | LOT |
| 3/16/09 | ARNOLD W. BARNETT | 14987 | 901 | 1.03,1.04 |
| | | | | |
| | | | | |
| | | | | |
| | | | | |

THIS MAP WAS FORMALLY
CERTIFIED BY THE
DIVISION OF TAXATION ON
SEPTEMBER 26, 2008, SIGNED
BY SANTO C. DIDONATO AND
ASSIGNED SERIAL NUMBER 926

**TAX MAP
TOWN OF DOVER**

MORRIS COUNTY
SCALE: 1" = 100'

NEW JERSEY
DATE: JUNE 2007

ARNOLD W. BARNETT
PROFESSIONAL ENGINEER AND LAND SURVEYOR
NEW JERSEY LICENSE NO. 14987
850 SO. WHITE HORSE PIKE
HAMMONTON, NEW JERSEY 08037
CO# 24GA27973300

TO SHOW CONDITIONS AS OF JULY 2016

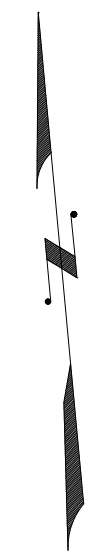
| REVISIONS | | | | |
|-----------|---------------------|--------|-------|----------------|
| DATE | BY | LIC.NO | BLOCK | LOT |
| 2/10/09 | ARNOLD W. BARNETT | 14987 | 1702 | 12-14 |
| 2/10/09 | ARNOLD W. BARNETT | 14987 | 1707 | 19,27 |
| 3/18/15 | CHARLES A. ATKINSON | 33994 | 1702 | 26,26.02,26.03 |

SHEET 18

SHEET 21

* THIS MAP IS A COPY OF THE ORIGINAL MAP PREPARED BY ARNOLD R. SMITH DATED 1931. THE ORIGINAL IS ON FILE IN THE ENGINEERS OFFICE.

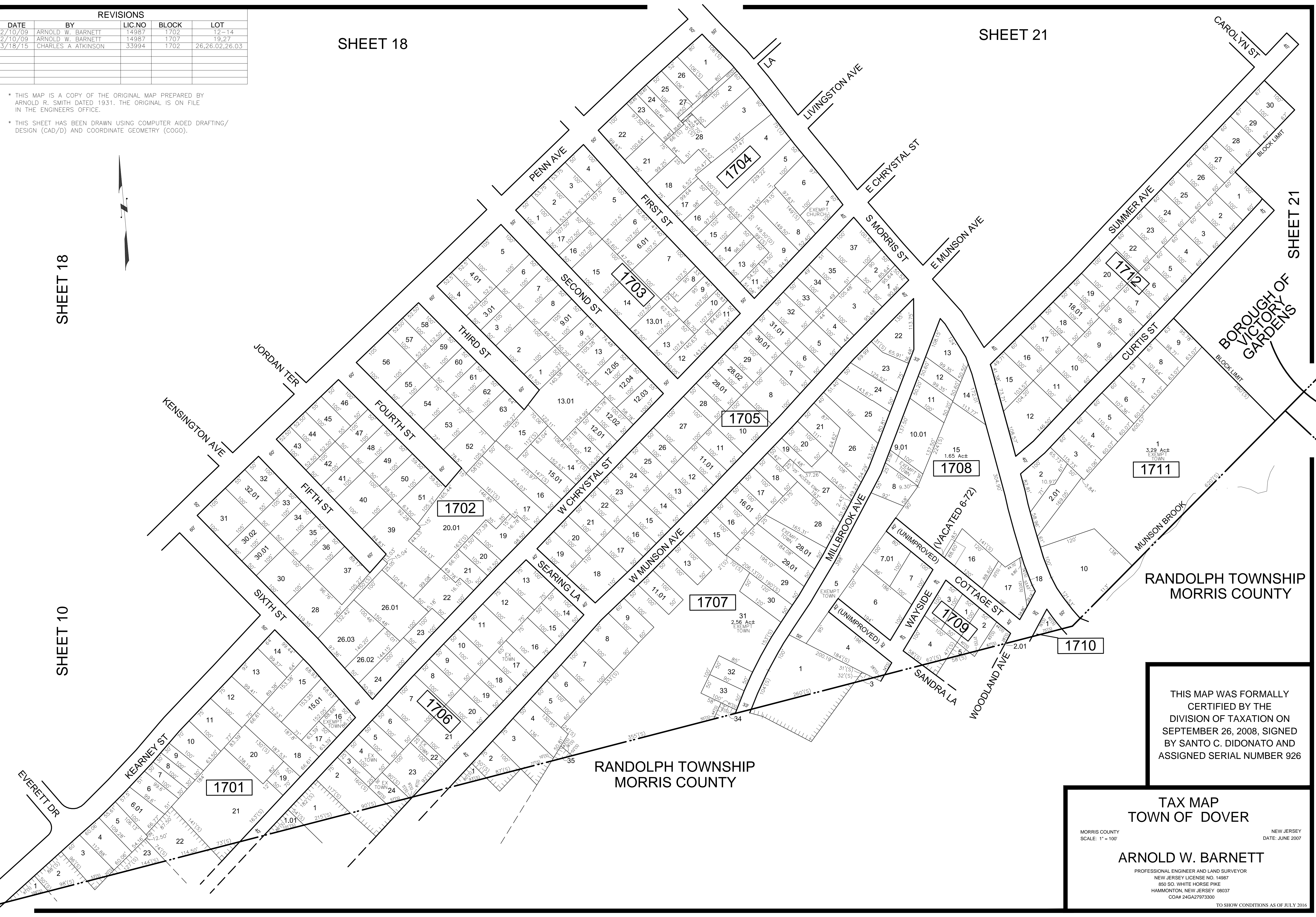
* THIS SHEET HAS BEEN DRAWN USING COMPUTER AIDED DRAFTING/ DESIGN (CAD/D) AND COORDINATE GEOMETRY (COCO).



SHEET 18

SHEET 10

BOROUGH OF VICTORY GARDENS



RANDOLPH TOWNSHIP MORRIS COUNTY

RANDOLPH TOWNSHIP MORRIS COUNTY

THIS MAP WAS FORMALLY CERTIFIED BY THE DIVISION OF TAXATION ON SEPTEMBER 26, 2008, SIGNED BY SANTO C. DIDONATO AND ASSIGNED SERIAL NUMBER 926

TAX MAP
TOWN OF DOVER

MORRIS COUNTY SCALE: 1" = 100'

NEW JERSEY DATE: JUNE 2007

ARNOLD W. BARNETT
PROFESSIONAL ENGINEER AND LAND SURVEYOR
NEW JERSEY LICENSE NO. 14987
850 SO. WHITE HORSE PIKE
HAMMONTON, NEW JERSEY 08037
CO#A# 24GA27973300

TO SHOW CONDITIONS AS OF JULY 2016

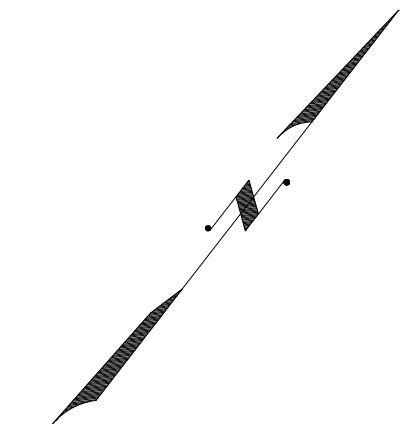
| REVISIONS | | | | |
|-----------|--------------------|--------|-------|------|
| DATE | BY | LIC.NO | BLOCK | LOT |
| 2/10/09 | ARNOLD W. BARNETT | 14987 | 1803 | 7 |
| 2/10/09 | ARNOLD W. BARNETT | 14987 | 1804 | 1,01 |
| 2/10/09 | ARNOLD W. BARNETT | 14987 | 1812 | 7 |
| 2/10/09 | ARNOLD W. BARNETT | 14987 | 1810 | 1,18 |
| 2/10/09 | ARNOLD W. BARNETT | 14987 | 1808 | 8,16 |
| 2/10/09 | ARNOLD W. BARNETT | 14987 | 1811 | 7,8 |
| 3/17/15 | CHARLES A ATKINSON | 33994 | 1805 | 8,10 |

* THIS MAP IS A COPY OF THE ORIGINAL MAP PREPARED BY ARNOLD R. SMITH DATED 1931. THE ORIGINAL IS ON FILE IN THE ENGINEERS OFFICE.

* THIS SHEET HAS BEEN DRAWN USING COMPUTER AIDED DRAFTING/ DESIGN (CAD/D) AND COORDINATE GEOMETRY (COGO).

SHEET 12

SHEET 12



SHEET 19

SHEET 11

SHEET 10

SHEET 17

SHEET 21



| BLOCK 1810 LOTS | | |
|-----------------|---------|------|
| UNIT # | STORIES | SQFT |
| C01 | 2 | 1200 |
| C02 | 2 | 1120 |
| C03 | 2 | 1176 |
| C04 | 2 | 1120 |
| C05 | 2 | 1200 |
| C06 | 2 | 1200 |
| C07 | 2 | 1120 |
| C08 | 2 | 1176 |
| C09 | 2 | 1120 |
| C10 | 2 | 1176 |
| C11 | 2 | 1200 |
| C12 | 2 | 1200 |
| C13 | 2 | 1200 |
| C14 | 2 | 1120 |
| C15 | 2 | 1120 |
| C16 | 2 | 1200 |

DETAIL "A"

THIS MAP WAS FORMALLY CERTIFIED BY THE DIVISION OF TAXATION ON SEPTEMBER 26, 2008, SIGNED BY SANTO C. DIDONATO AND ASSIGNED SERIAL NUMBER 926

TAX MAP
TOWN OF DOVER

MORRIS COUNTY
SCALE: 1" = 100'

NEW JERSEY
DATE: JUNE 2007

ARNOLD W. BARNETT

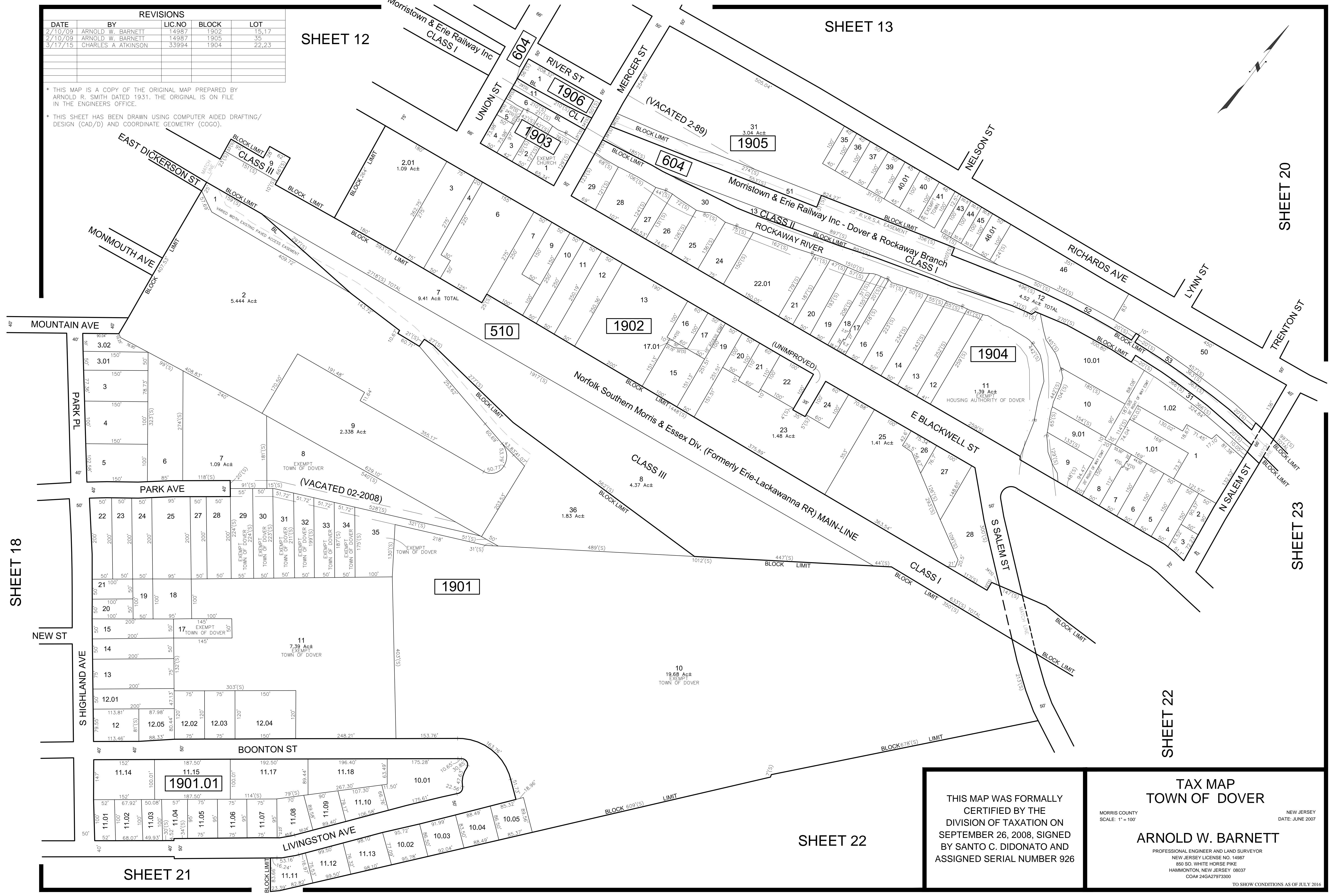
PROFESSIONAL ENGINEER AND LAND SURVEYOR
NEW JERSEY LICENSE NO. 14987
850 SO. WHITE HORSE PIKE
HAMMONTON, NEW JERSEY 08037
CO#A 24GA27973300

TO SHOW CONDITIONS AS OF JULY 2016

| REVISIONS | | | | |
|-----------|--------------------|--------|-------|-------|
| DATE | BY | LIC.NO | BLOCK | LOT |
| 2/10/09 | ARNOLD W. BARNETT | 14987 | 1902 | 15,17 |
| 2/10/09 | ARNOLD W. BARNETT | 14987 | 1905 | 35 |
| 3/17/15 | CHARLES A ATKINSON | 33994 | 1904 | 22,23 |

* THIS MAP IS A COPY OF THE ORIGINAL MAP PREPARED BY ARNOLD R. SMITH DATED 1931. THE ORIGINAL IS ON FILE IN THE ENGINEERS OFFICE.

* THIS SHEET HAS BEEN DRAWN USING COMPUTER AIDED DRAFTING/ DESIGN (CAD/D) AND COORDINATE GEOMETRY (COGO).



THIS MAP WAS FORMALLY CERTIFIED BY THE DIVISION OF TAXATION ON SEPTEMBER 26, 2008, SIGNED BY SANTO C. DIDONATO AND ASSIGNED SERIAL NUMBER 926

TAX MAP
TOWN OF DOVER

MORRIS COUNTY
 SCALE: 1" = 100'

NEW JERSEY
 DATE: JUNE 2007

ARNOLD W. BARNETT
 PROFESSIONAL ENGINEER AND LAND SURVEYOR
 NEW JERSEY LICENSE NO. 14987
 850 SO. WHITE HORSE PIKE
 HAMMONTON, NEW JERSEY 08037
 CO# 24GA27973300

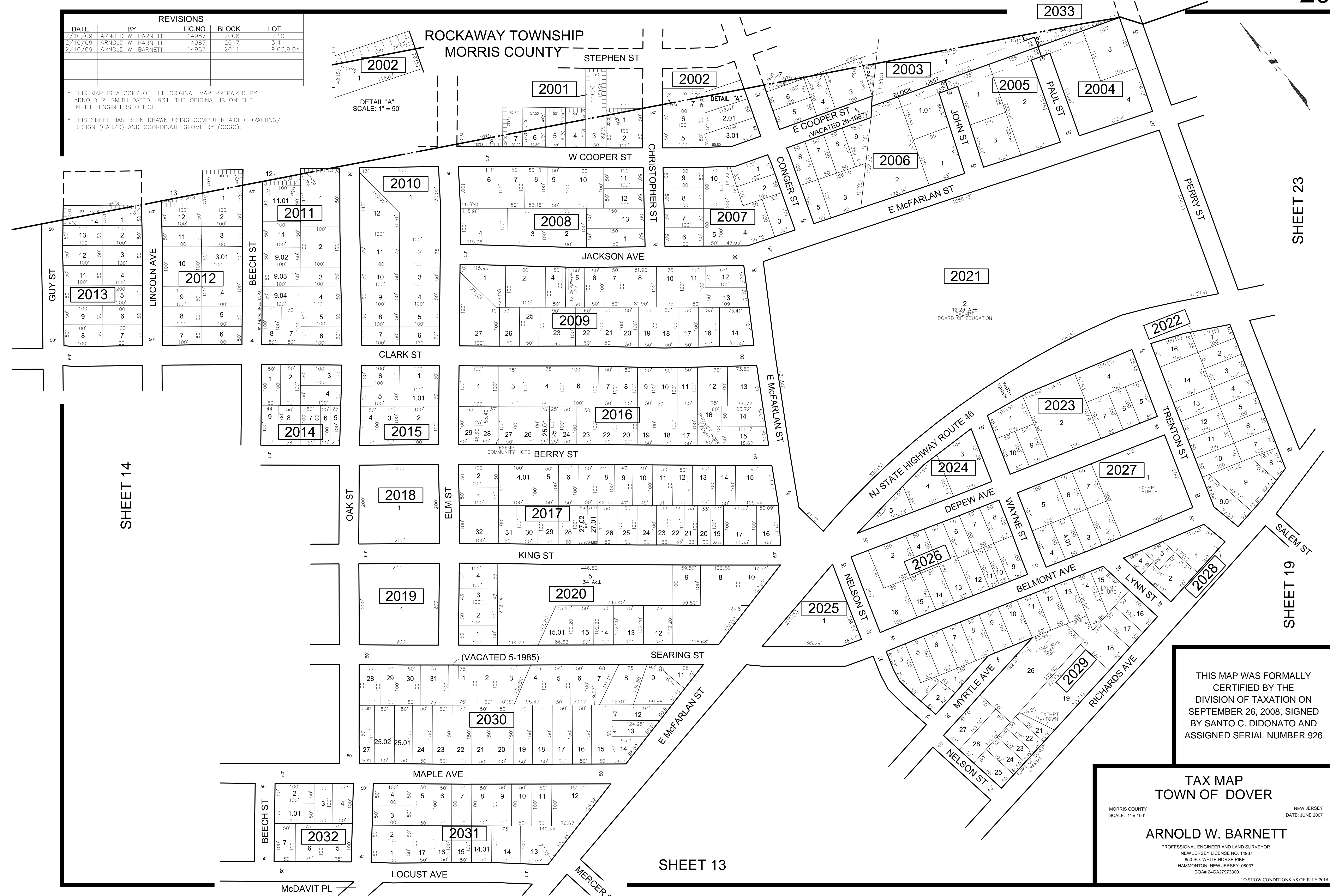
TO SHOW CONDITIONS AS OF JULY 2016

| REVISIONS | | | | |
|-----------|-------------------|--------|-------|-----------|
| DATE | BY | LIC.NO | BLOCK | LOT |
| 2/10/09 | ARNOLD W. BARNETT | 14987 | 2008 | 9,10 |
| 2/10/09 | ARNOLD W. BARNETT | 14987 | 2017 | 3,4 |
| 2/10/09 | ARNOLD W. BARNETT | 14987 | 2011 | 9,03,9,04 |

* THIS MAP IS A COPY OF THE ORIGINAL MAP PREPARED BY ARNOLD R. SMITH DATED 1931. THE ORIGINAL IS ON FILE IN THE ENGINEERS OFFICE.

* THIS SHEET HAS BEEN DRAWN USING COMPUTER AIDED DRAFTING/ DESIGN (CAD/D) AND COORDINATE GEOMETRY (COGO).

ROCKAWAY TOWNSHIP
MORRIS COUNTY



DETAIL "A"
SCALE: 1" = 50'

SHEET 14

SHEET 23

SHEET 19

SHEET 13

THIS MAP WAS FORMALLY
CERTIFIED BY THE
DIVISION OF TAXATION ON
SEPTEMBER 26, 2008, SIGNED
BY SANTO C. DIDONATO AND
ASSIGNED SERIAL NUMBER 926

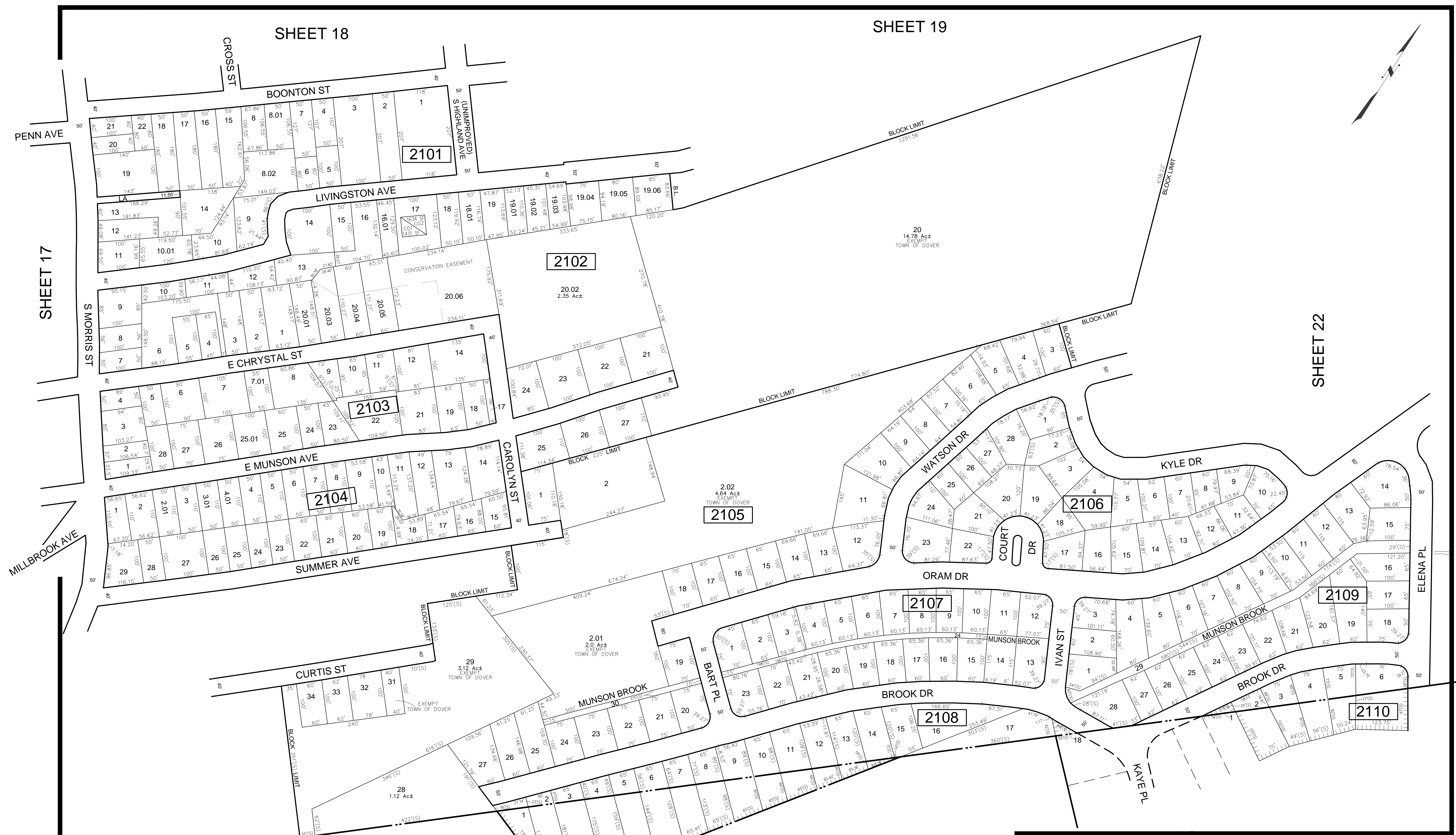
TAX MAP
TOWN OF DOVER

MORRIS COUNTY
SCALE: 1" = 100'

NEW JERSEY
DATE: JUNE 2007

ARNOLD W. BARNETT
PROFESSIONAL ENGINEER AND LAND SURVEYOR
NEW JERSEY LICENSE NO. 14987
850 SO. WHITE HORSE PIKE
HAMMONTON, NEW JERSEY 08037
CO# 24GA27973300

TO SHOW CONDITIONS AS OF JULY 2016



**RANDOLPH TOWNSHIP
MORRIS COUNTY**

| REVISIONS | | | | |
|-----------|---------------------|--------|-------|--------|
| DATE | BY | LIC NO | BLOCK | LOT |
| 3/17/15 | ARNOLD W. BARNETT | 14987 | 2102 | 17 |
| 11/10/15 | CHARLES A. ATKINSON | 33994 | 2103 | 7,7,01 |

**RANDOLPH TOWNSHIP
MORRIS COUNTY**

**BOROUGH OF VICTORY GARDENS
MORRIS COUNTY**

* THIS MAP IS A COPY OF THE ORIGINAL MAP PREPARED BY ARNOLD R. SMITH DATED 1931. THE ORIGINAL IS ON FILE IN THE ENGINEERS OFFICE.
* THIS SHEET HAS BEEN DRAWN USING COMPUTER AIDED DRAFTING/ DESIGN (CAD/D) AND COORDINATE GEOMETRY (COGO).

THIS MAP WAS FORMALLY CERTIFIED BY THE DIVISION OF TAXATION ON SEPTEMBER 26, 2008, SIGNED BY SANTO C. DIDONATO AND ASSIGNED SERIAL NUMBER 926

**TAX MAP
TOWN OF DOVER**

MORRIS COUNTY
SCALE: 1" = 100'

NEW JERSEY
DATE: JUNE 2007

ARNOLD W. BARNETT

PROFESSIONAL ENGINEER AND LAND SURVEYOR
NEW JERSEY LICENSE NO. 14987
850 SO. WHITE HORSE PIKE
HAMMONTON, NEW JERSEY 08037
CO# 24GA27973300

TO SHOW CONDITIONS AS OF JULY 2016

SHEET 19

SHEET 23

SHEET 19

SHEET 21

SHEET 21

RANDOLPH TOWNSHIP
MORRIS COUNTY

* THIS MAP IS A COPY OF THE ORIGINAL MAP PREPARED BY
ARNOLD R. SMITH DATED 1931. THE ORIGINAL IS ON FILE
IN THE ENGINEERS OFFICE.

* THIS SHEET HAS BEEN DRAWN USING COMPUTER AIDED DRAFTING/
DESIGN (CAD/D) AND COORDINATE GEOMETRY (COGO).

| REVISIONS | | | | |
|-----------|--------------------|--------|-------|-----------|
| DATE | BY | LIC.NO | BLOCK | LOT |
| 2/10/09 | ARNOLD W. BARNETT | 14987 | 2203 | 1 |
| 2/10/09 | ARNOLD W. BARNETT | 14987 | 2206 | 1,01-3,01 |
| 2/10/09 | ARNOLD W. BARNETT | 14987 | 2204 | 2 |
| 3/17/15 | CHARLES A ATKINSON | 33994 | 2205 | 1,2,17 |

THIS MAP WAS FORMALLY
CERTIFIED BY THE
DIVISION OF TAXATION ON
SEPTEMBER 26, 2008, SIGNED
BY SANTO C. DIDONATO AND
ASSIGNED SERIAL NUMBER 926

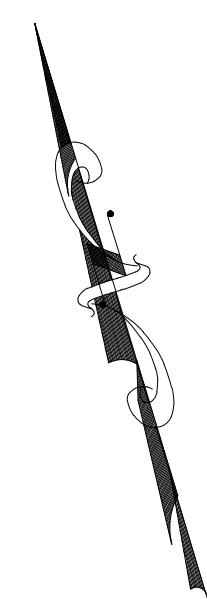
MORRIS COUNTY
SCALE: 1" = 100'

NEW JERSEY
DATE: JUNE 2007

TAX MAP
TOWN OF DOVER

ARNOLD W. BARNETT
PROFESSIONAL ENGINEER AND LAND SURVEYOR
NEW JERSEY LICENSE NO. 14987
850 SO. WHITE HORSE PIKE
HAMMONTON, NEW JERSEY 08037
CO# 24GA27973300

TO SHOW CONDITIONS AS OF JULY 2016



SHEET 20

SHEET 19

ROCKAWAY TOWNSHIP
MORRIS COUNTY

ROCKAWAY TOWNSHIP
MORRIS COUNTY

| BLOCK 2316 LOT 3 | | |
|------------------|---------|------|
| UNIT# | STORIES | SQFT |
| C01 | 2 | 1256 |
| C02 | 2 | 1256 |

DETAIL 'A'

* THIS MAP IS A COPY OF THE ORIGINAL MAP PREPARED BY ARNOLD R. SMITH DATED 1931. THE ORIGINAL IS ON FILE IN THE ENGINEERS OFFICE.

* THIS SHEET HAS BEEN DRAWN USING COMPUTER AIDED DRAFTING/ DESIGN (CAD/D) AND COORDINATE GEOMETRY (COGO).

| REVISIONS | | | | |
|-----------|---------------------|--------|-----------|----------|
| DATE | BY | LIC.NO | BLOCK | LOT |
| 2/10/09 | ARNOLD W. BARNETT | 14987 | 2310 | 7,8,9,15 |
| 2/10/09 | ARNOLD W. BARNETT | 14987 | 2303 | 5 |
| 2/10/09 | ARNOLD W. BARNETT | 14987 | Beatty St | |
| 10/2010 | CHARLES A. ATKINSON | 33994 | 2303 | 1,13,20 |
| 02/2015 | CHARLES A. ATKINSON | 33994 | 2316 | 14 |

SHEET 22

THIS MAP WAS FORMALLY CERTIFIED BY THE DIVISION OF TAXATION ON SEPTEMBER 26, 2008, SIGNED BY SANTO C. DIDONATO AND ASSIGNED SERIAL NUMBER 926

TAX MAP
TOWN OF DOVER

MORRIS COUNTY
SCALE: 1" = 100'

NEW JERSEY
DATE: JUNE 2007

ARNOLD W. BARNETT

PROFESSIONAL ENGINEER AND LAND SURVEYOR
NEW JERSEY LICENSE NO. 14987
850 SO. WHITE HORSE PIKE
HAMMONTON, NEW JERSEY 08037
CO# 24GA27973300

TO SHOW CONDITIONS AS OF JULY 2016